



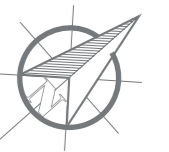
# LE CORTI DI VIA LODA

VIA LODA - CASTELFRANCO EMILIA



# LE CORTI DI VIA LODA

## VIA LODA - CASTELFRANCO EMILIA



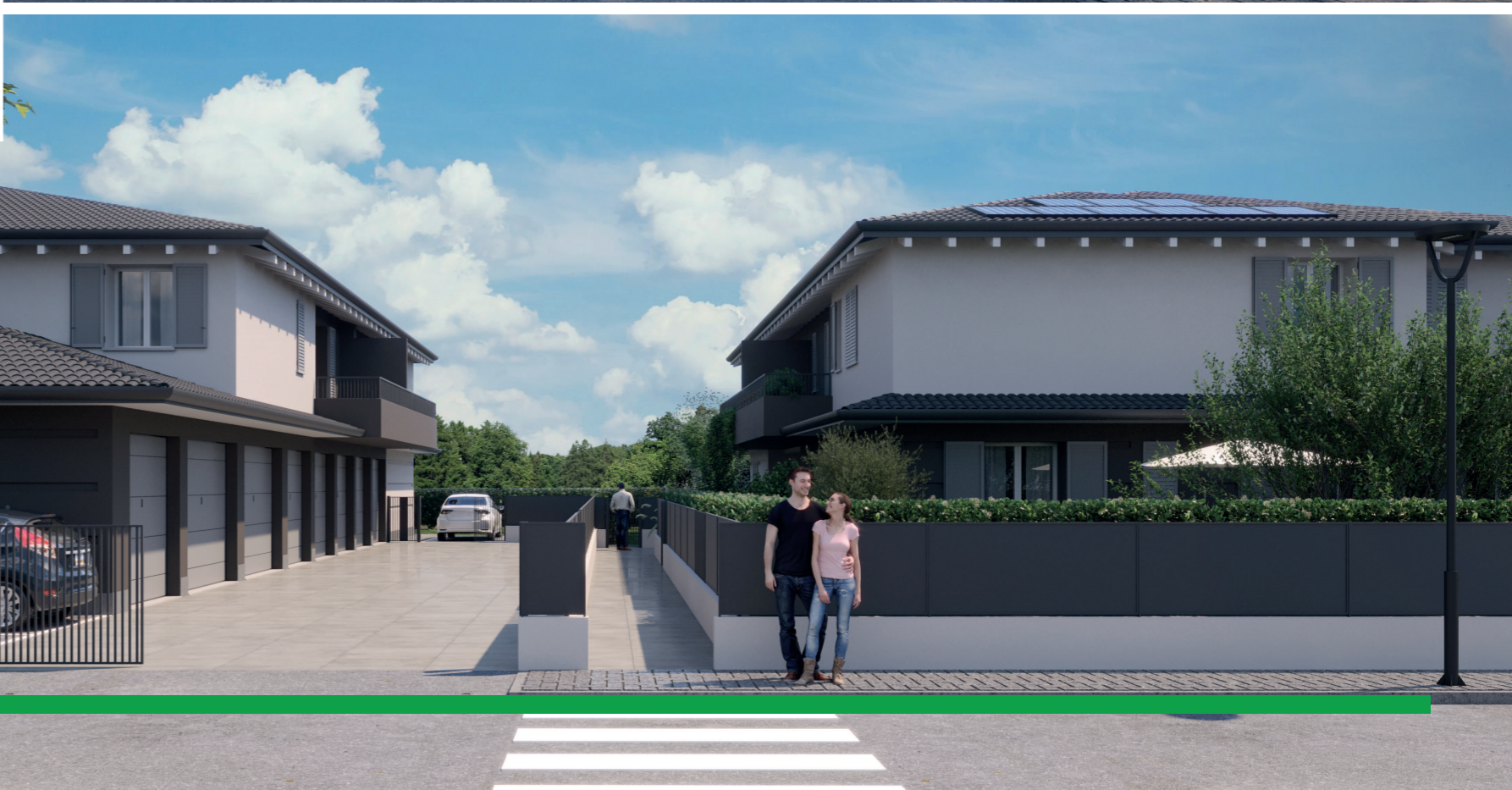
# LE CORTI DI VIA LODA

VIA LODA - CASTELFRANCO EMILIA



# LE CORTI DI VIA LODA

VIA LODA - CASTELFRANCO EMILIA



# LE CORTI DI VIA LODA

VIA LODA - CASTELFRANCO EMILIA



PALAZZINA 1

PALAZZINA 2

VILLETTE I-L-M-N

VILLETTE E-F-G-H

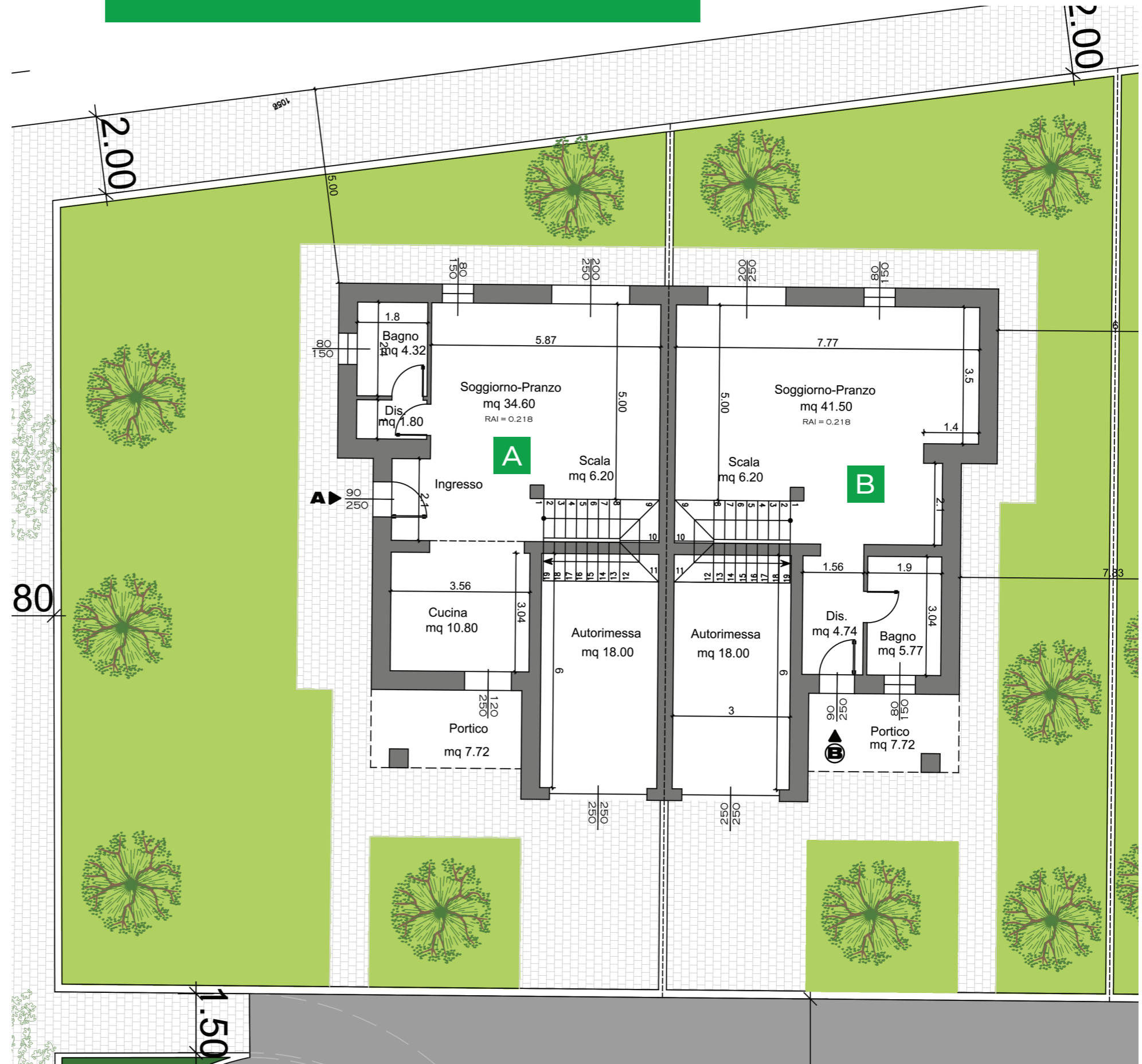
VILLETTE A-B-C-D

# LE CORTI DI VIA LODA VILLETTE A-B

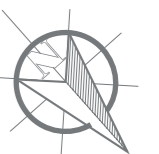
**Impresa Salatiello** SRL



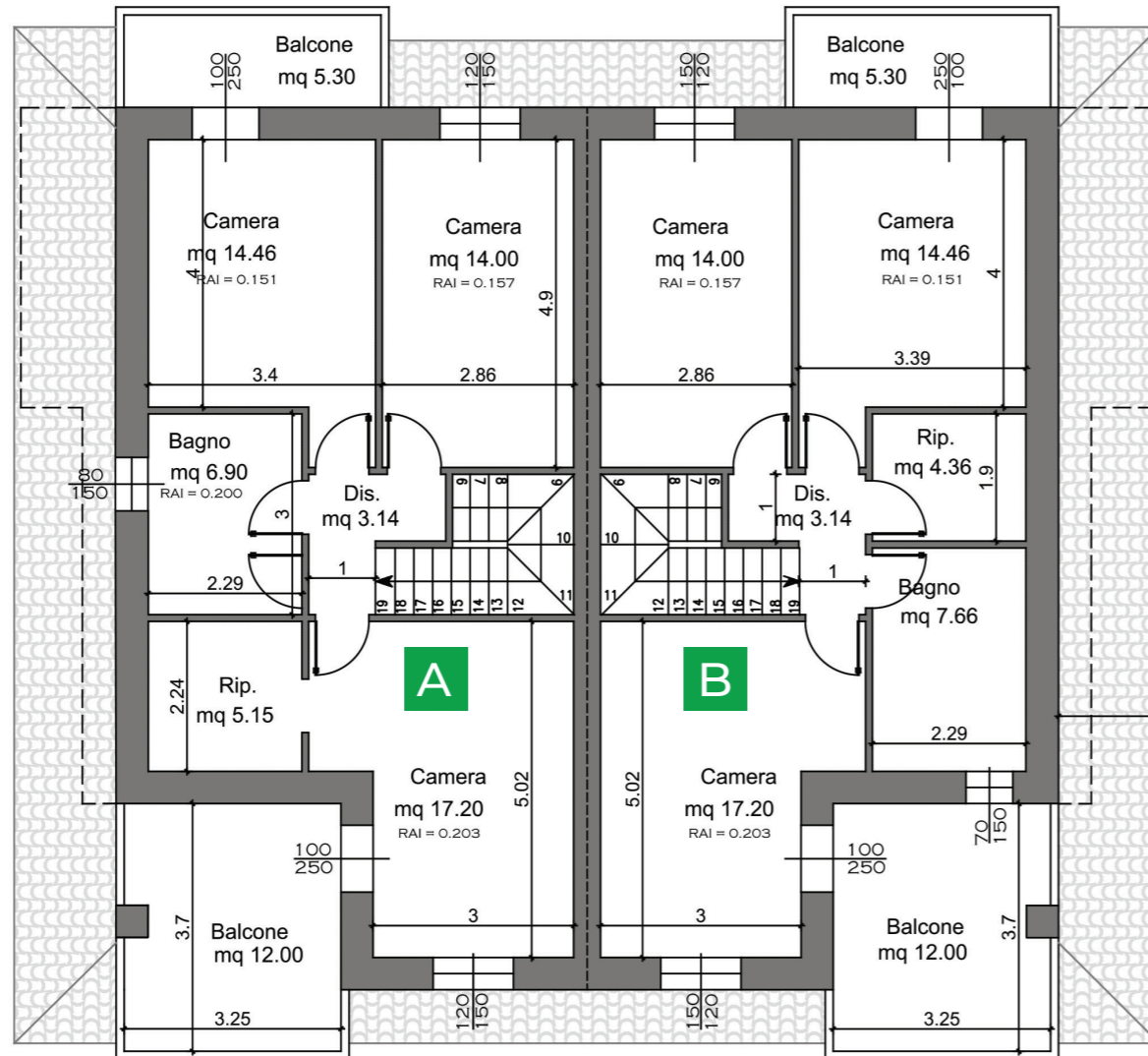
VISTA 3D



PIANTA PIANO TERRA (disegno non in scala)

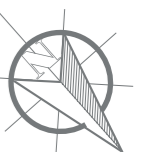


# LE CORTI DI VIA LODA VILLETTE A-B



VILLA A			
MQ	MQ	%	Sup. Commerciali
Appartamento	153,51	100%	153,51
Balcone/portico	26,53	60%	15,92
Garage	22,5	60%	13,50
Giardino	234,57	10%	23,46
<b>Totale</b>			<b>206,39</b>

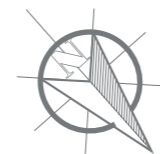
VILLA B			
MQ	MQ	%	Sup. Commerciali
Appartamento	153,51	100%	153,51
Balcone + portico	26,53	60%	15,92
Garage	22,5	60%	13,50
Giardino	165,55	10%	16,56
<b>Totale</b>			<b>199,48</b>



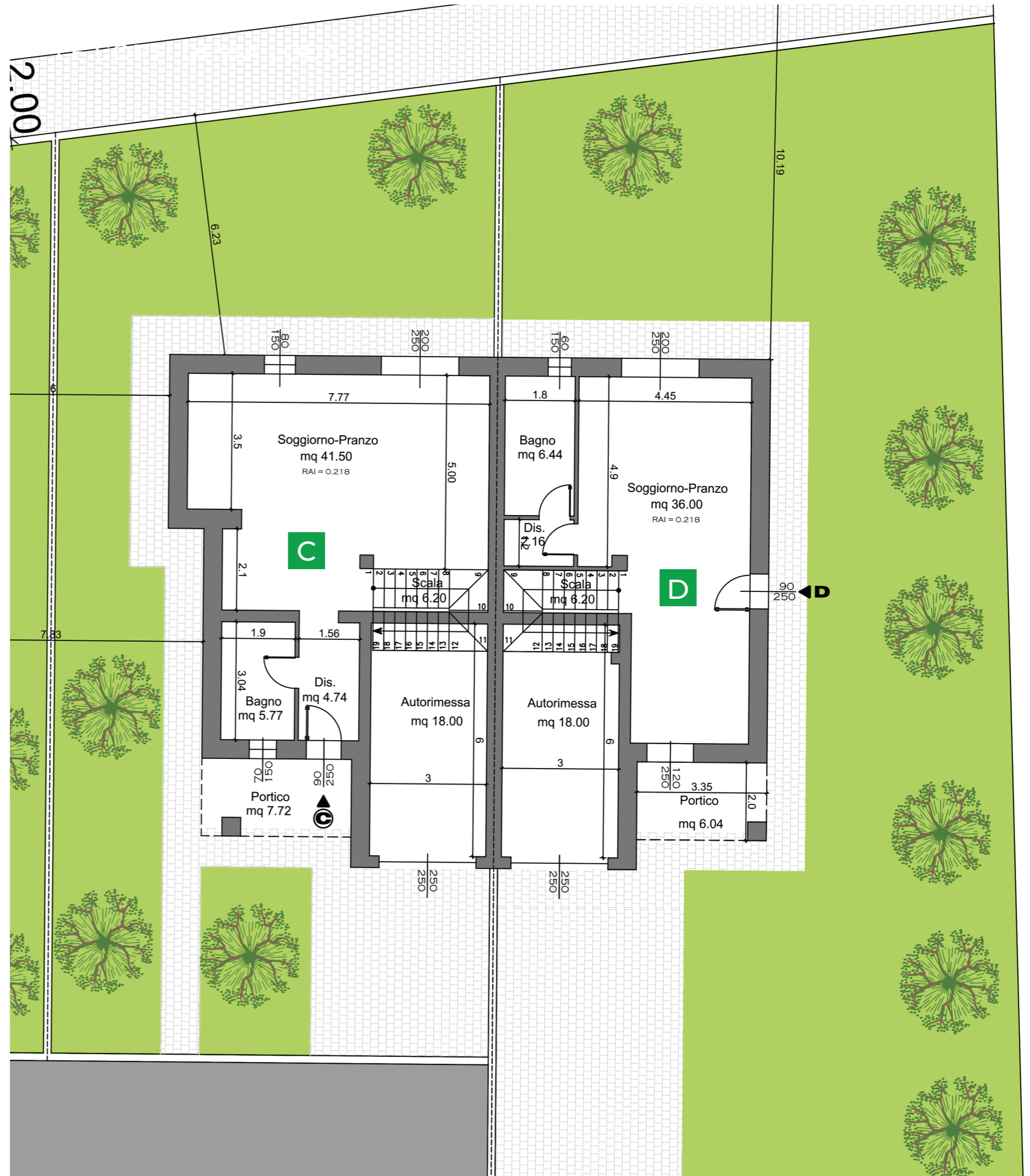
LE CORTI DI VIA LODA  
VILLETTE C-D



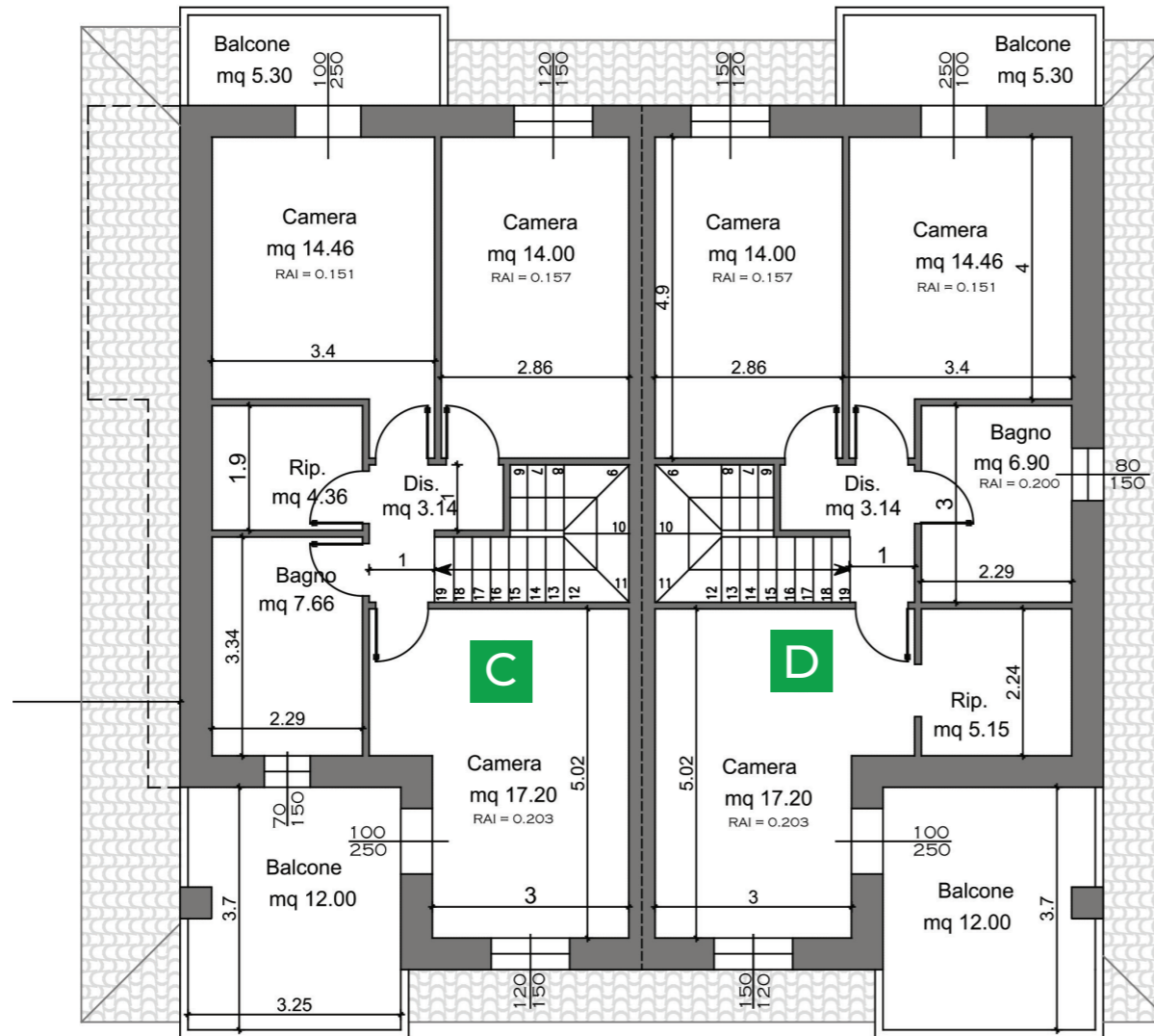
VISTA 3D



PIANTA PIANO TERRA (disegno non in scala)

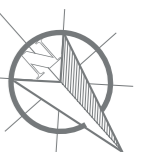


# LE CORTI DI VIA LODA VILLETTE C-D



VILLA C			
MQ	MQ	%	Sup. Commerciali
Appartamento	153,51	100%	153,51
Balcone + portico	26,53	60%	15,92
Garage	22,5	60%	13,50
Giardino	183,17	10%	18,32
<b>Totale</b>			<b>201,25</b>

VILLA D			
MQ	MQ	%	Sup. Commerciali
Appartamento	144,1	100%	144,10
Balcone + portico	25,1	60%	15,06
Garage	22,5	60%	13,50
Giardino	339,7	5%	16,99
<b>Totale</b>			<b>189,65</b>



LE CORTI DI VIA LODA  
VILLETTE A-B



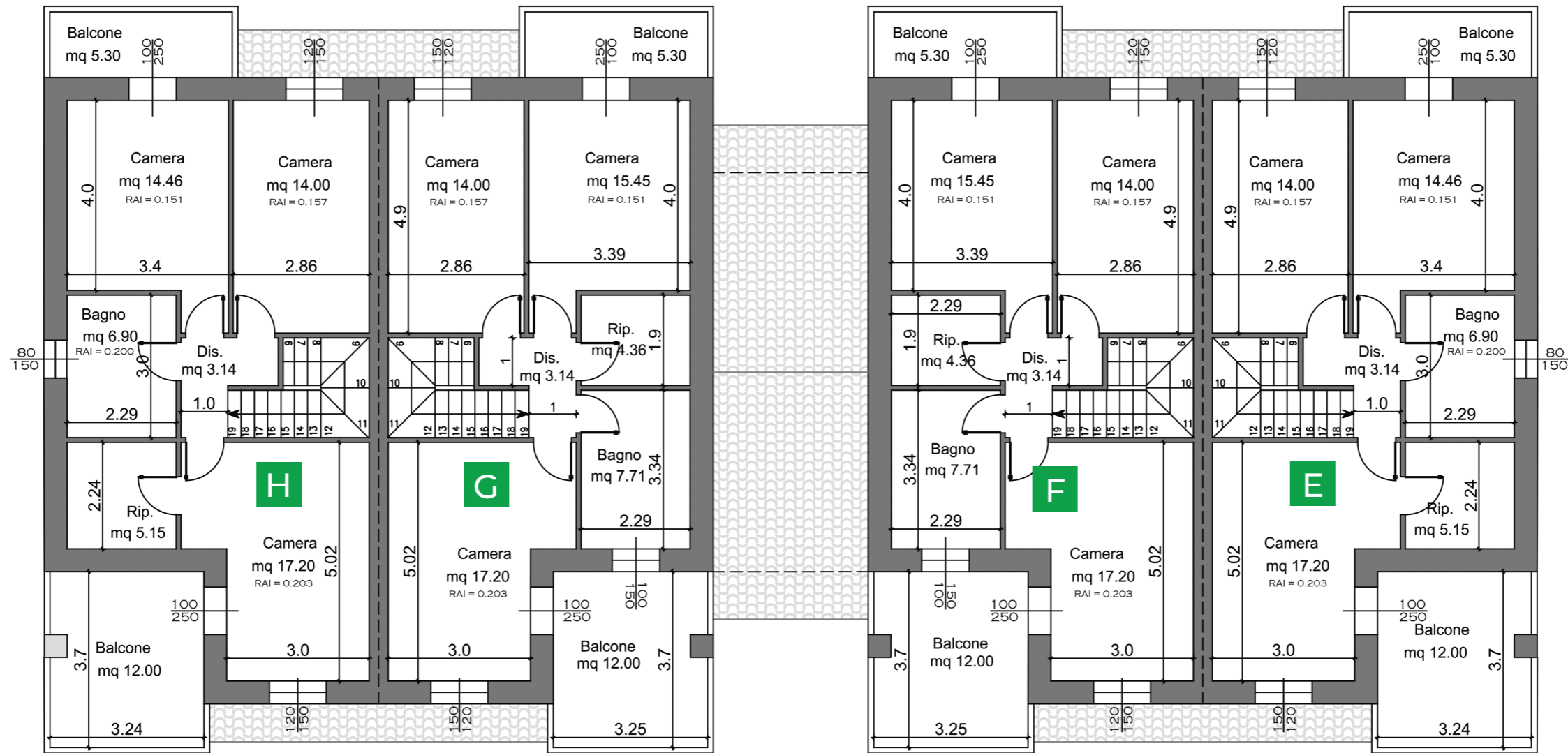
LE CORTI DI VIA LODA  
VILLETTE A-B-C-D



# LE CORTI DI VIA LODA VILLETTE E-F-G-H



# LE CORTI DI VIA LODA VILLETTE E-F-G-H

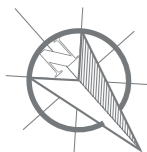


VILLA G			
MQ	MQ	%	Sup. Commerciali
Appartamento	144,1	100%	144,10
Balcone + portico	37,6	60%	22,56
Garage	22,5	60%	13,50
Giardino	103,67	10%	10,37
<b>Totale</b>			<b>190,53</b>

VILLA E			
MQ	MQ	%	Sup. Commerciali
Appartamento	144,1	100%	144,10
Balcone + portico	25,1	60%	15,06
Garage	22,5	60%	13,50
Giardino	224,39	10%	22,44
<b>Totale</b>			<b>195,10</b>

VILLA H			
MQ	MQ	%	Sup. Commerciali
Appartamento	144,1	100%	144,10
Balcone + portico	25,1	60%	15,06
Garage	22,5	60%	13,50
Giardino	140,66	10%	14,07
<b>Totale</b>			<b>186,73</b>

VILLA F			
MQ	MQ	%	Sup. Commerciali
Appartamento	144,1	100%	144,10
Balcone + portico	37,6	60%	22,56
Garage	22,5	60%	13,50
Giardino	103,67	10%	10,37
<b>Totale</b>			<b>190,53</b>



LE CORTI DI VIA LODA  
VILLETTE E-F-G-H



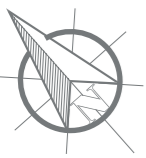
LE CORTI DI VIA LODA  
VILLETTE E-F-G-H



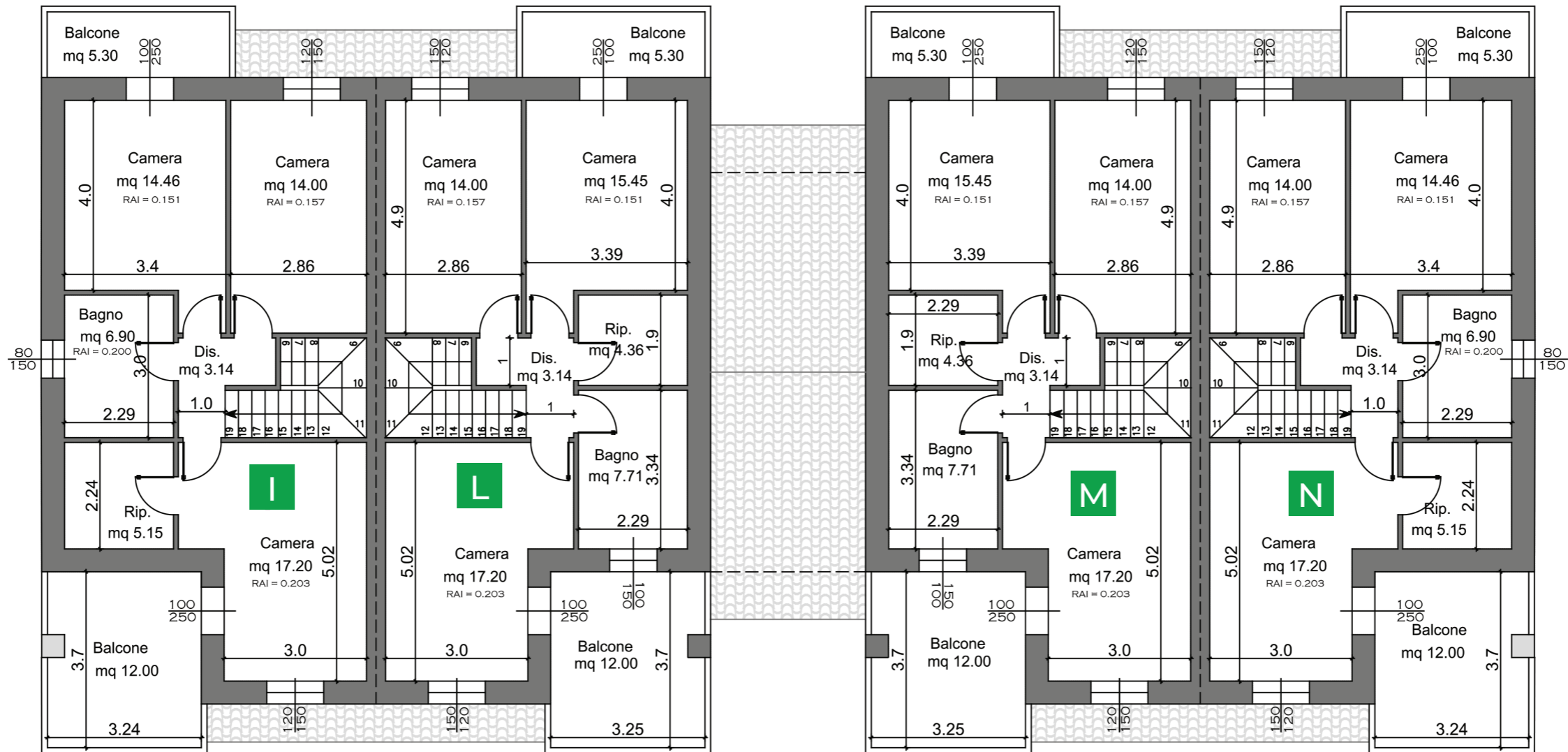
# LE CORTI DI VIA LODA VILLETTE I-L-M-N



PIANTA PIANO TERRA (disegno non in scala)



# LE CORTI DI VIA LODA VILLETTE I-L-M-N

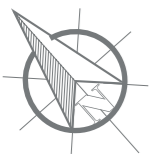


VILLA I			
MQ	MQ	%	Sup. Commerciali
Appartamento	144,1	100%	144,10
Balcone + portico	25,1	60%	15,06
Garage	22,5	60%	13,50
Giardino	225,87	10%	22,59
<b>Totale</b>			<b>195,25</b>

VILLA M			
MQ	MQ	%	Sup. Commerciali
Appartamento	144,1	100%	144,10
Balcone + portico	37,6	60%	22,56
Garage	22,5	60%	13,50
Giardino	103,61	10%	10,36
<b>Totale</b>			<b>190,52</b>

VILLA L			
MQ	MQ	%	Sup. Commerciali
Appartamento	144,1	100%	144,10
Balcone + portico	37,6	60%	22,56
Garage	22,5	60%	13,50
Giardino	103,61	10%	10,36
<b>Totale</b>			<b>190,52</b>

VILLA N			
MQ	MQ	%	Sup. Commerciali
Appartamento	144,1	100%	144,10
Balcone + portico	25,1	60%	15,06
Garage	22,5	60%	13,50
Giardino	155,87	10%	15,59
<b>Totale</b>			<b>188,25</b>



LE CORTI DI VIA LODA  
VILLETTE I-L-M-N



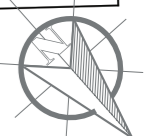
LE CORTI DI VIA LODA  
VILLETTE I-L-M-N



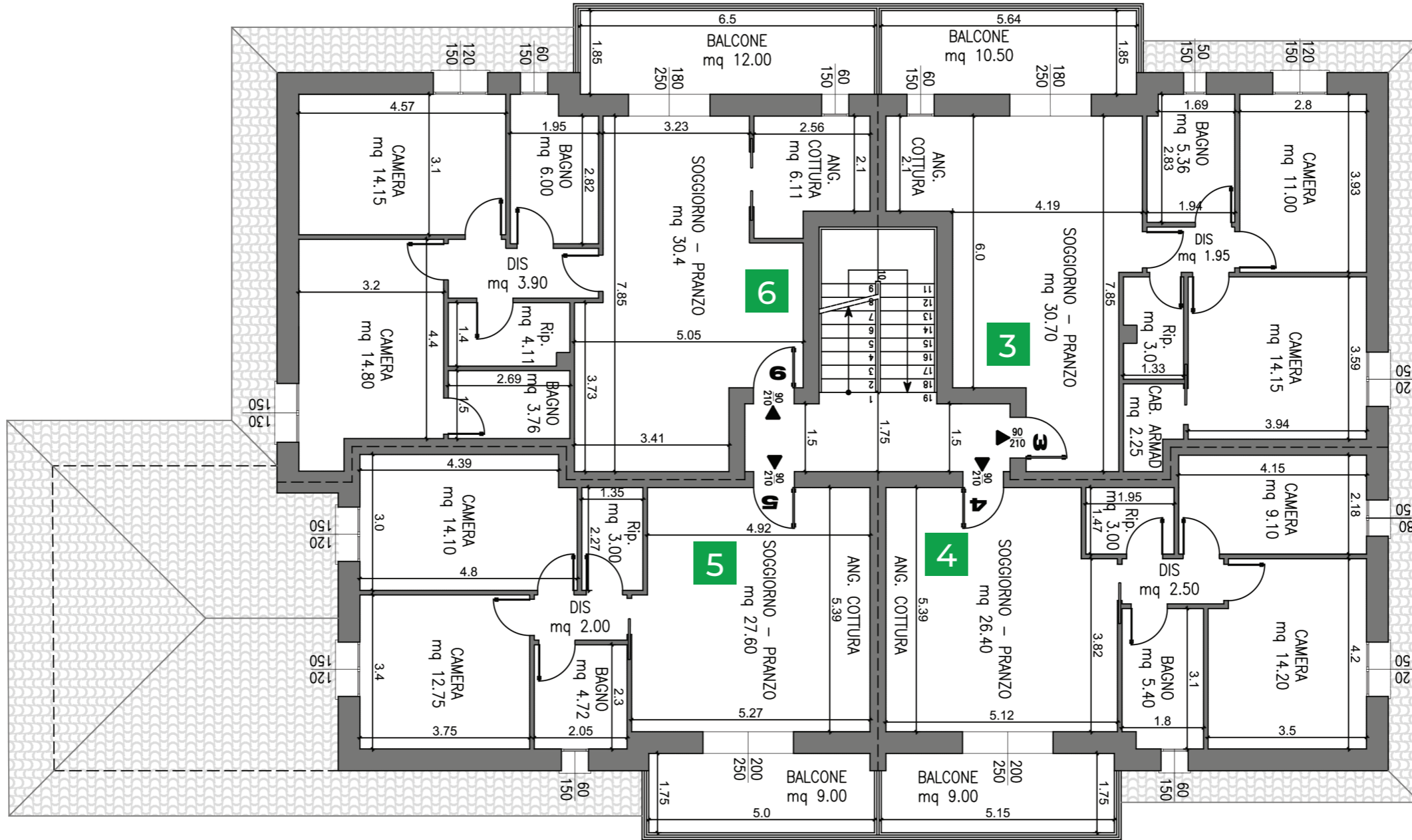
# LE CORTI DI VIA LODA PALAZZINA 1



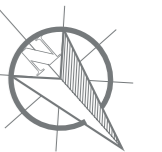
PIANTA PIANO TERRA (disegno non in scala)



# LE CORTI DI VIA LODA PALAZZINA 1



PIANTA PIANO PRIMO (disegno non in scala)



# LE CORTI DI VIA LODA PALAZZINA 1

PALAZZINA 1			
Destinazione	MQ	%	Sup. Commerciali
Appartamento 1	121,4	100%	121,40
Portico	12,06	60%	7,24
Giardino	263,42	8%	21,07
Garage 1	18,17	60%	10,90
<b>Totale</b>			<b>160,61</b>

Destinazione	MQ	%	Sup. Commerciali
Appartamento 2	90,4	100%	90,40
Garage 8	21,4	60%	12,84
Portico	8,2	60%	4,92
Giardino	184,46	10%	18,45
<b>Totale</b>			<b>126,61</b>

Destinazione	MQ	%	Sup. Commerciali
Appartamento 3	85,12	100%	85,12
Balcone	11,64	60%	6,98
Garage 2	17,3	60%	10,38
<b>Totale</b>			<b>102,48</b>

Destinazione	MQ	%	Sup. Commerciali
Appartamento 4	74,45	100%	74,45
Balcone	10,08	60%	6,05
Garage 3	17,3	60%	10,38
<b>Totale</b>			<b>90,88</b>

Destinazione	MQ	%	Sup. Commerciali
Appartamento 5	79	100%	79,00
Balcone	10,08	60%	6,05
Garage 4	17,3	60%	10,38
<b>Totale</b>			<b>95,43</b>

Destinazione	MQ	%	Sup. Commerciali
Appartamento 6	102,7	100%	102,70
Balcone	13,4	60%	8,04
Garage 5	17,3	60%	10,38
<b>Totale</b>			<b>121,12</b>

MQ	MQ	%	Sup. Commerciali
Parcheggio 1	12,5	50%	6,25
<b>Totale</b>			<b>6,25</b>

MQ	MQ	%	Sup. Commerciali
Parcheggio 2	12,5	50%	6,25
<b>Totale</b>			<b>6,25</b>



LE CORTI DI VIA LODA  
PALAZZINA 1



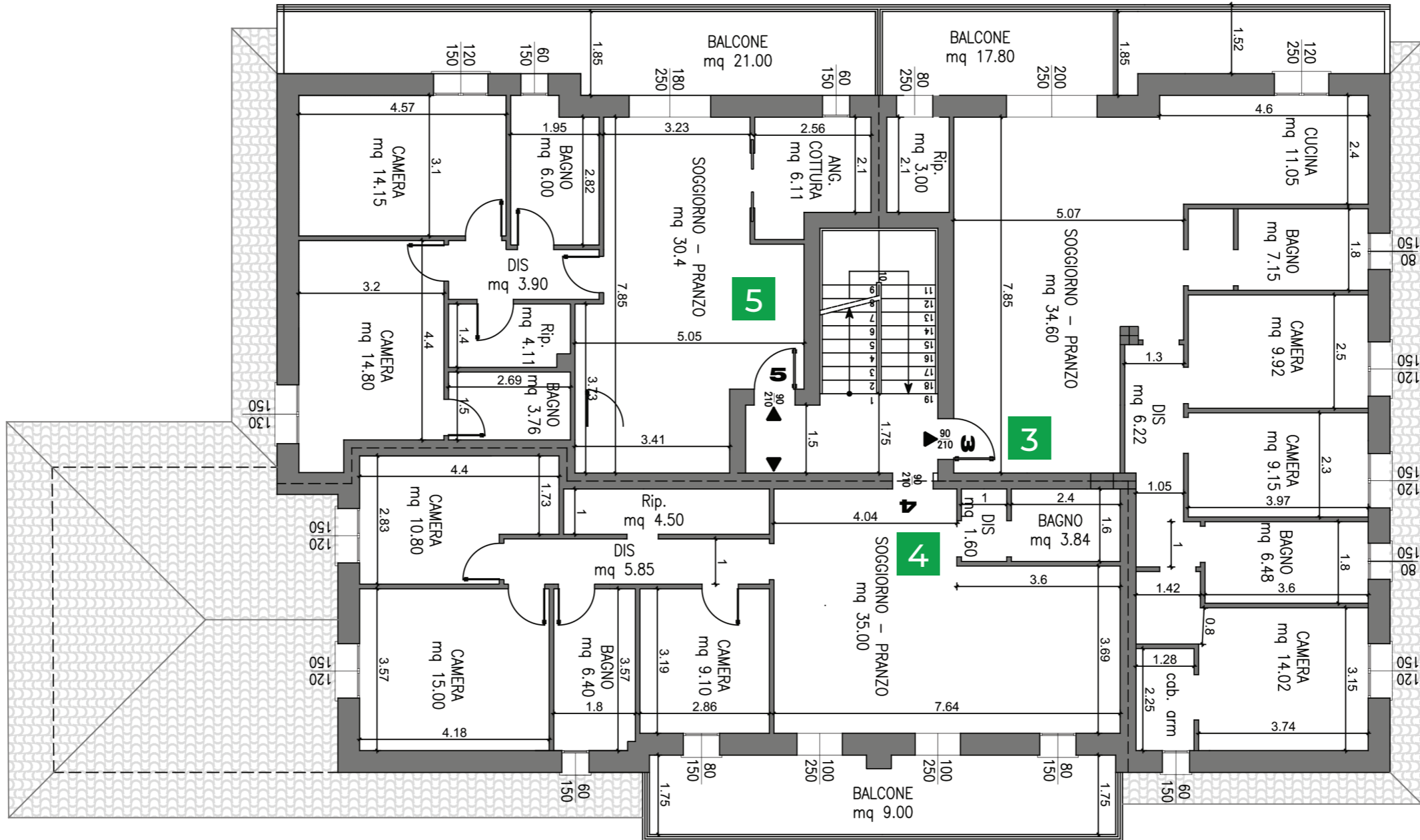
# LE CORTI DI VIA LODA PALAZZINA 2



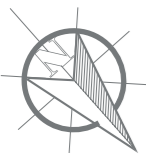
PIANTA PIANO TERRA (disegno non in scala)



# LE CORTI DI VIA LODA PALAZZINA 2



PIANTA PIANO PRIMO (disegno non in scala)



# LE CORTI DI VIA LODA PALAZZINA 2

PALAZZINA 2			
Destinazione	MQ	%	Sup. Commerciali
Appartamento 1	121,4	100%	121,40
Portico	12,06	60%	7,24
Giardino	250,85	8%	20,07
Garage 1	18,17	60%	10,90
<b>Totale</b>			<b>159,61</b>

Destinazione	MQ	%	Sup. Commerciali
Appartamento 2	90,4	100%	90,40
Portico	8,2	60%	4,92
Garage 8	21,4	60%	12,84
Giardino	176,15	10%	17,62
<b>Totale</b>			<b>125,78</b>

MQ	MQ	%	Sup. Commerciali
Appartamento 3	128,37	100%	128,37
Balcone	19,88	60%	11,93
Garage 3	17,3	60%	10,38
<b>Totale</b>			<b>150,68</b>

MQ	MQ	%	Sup. Commerciali
Appartamento 4	111,82	100%	111,82
Balcone	20,1	60%	12,06
Garage 4	17,3	60%	10,38
<b>Totale</b>			<b>134,26</b>

MQ	MQ	%	Sup. Commerciali
Appartamento 5	102,7	100%	102,70
Balcone	23,33	60%	14,00
Garage 5	17,3	60%	10,38
<b>Totale</b>			<b>127,08</b>

MQ	MQ	%	Sup. Commerciali
Parcheggio 1	12,5	50%	6,25
<b>Totale</b>			<b>6,25</b>

MQ	MQ	%	Sup. Commerciali
Parcheggio 2	12,5	50%	6,25
<b>Totale</b>			<b>6,25</b>

MQ	MQ	%	Sup. Commerciali
AUTORIMESSA 2	17,3	60%	10,38
<b>Totale</b>			<b>10,38</b>



LE CORTI DI VIA LODA  
PALAZZINA 2

