



LE CORTI DI VIA LODA

VIA LODA - CASTELFRANCO EMILIA



LE CORTI DI VIA LODA

VIA LODA - CASTELFRANCO EMILIA



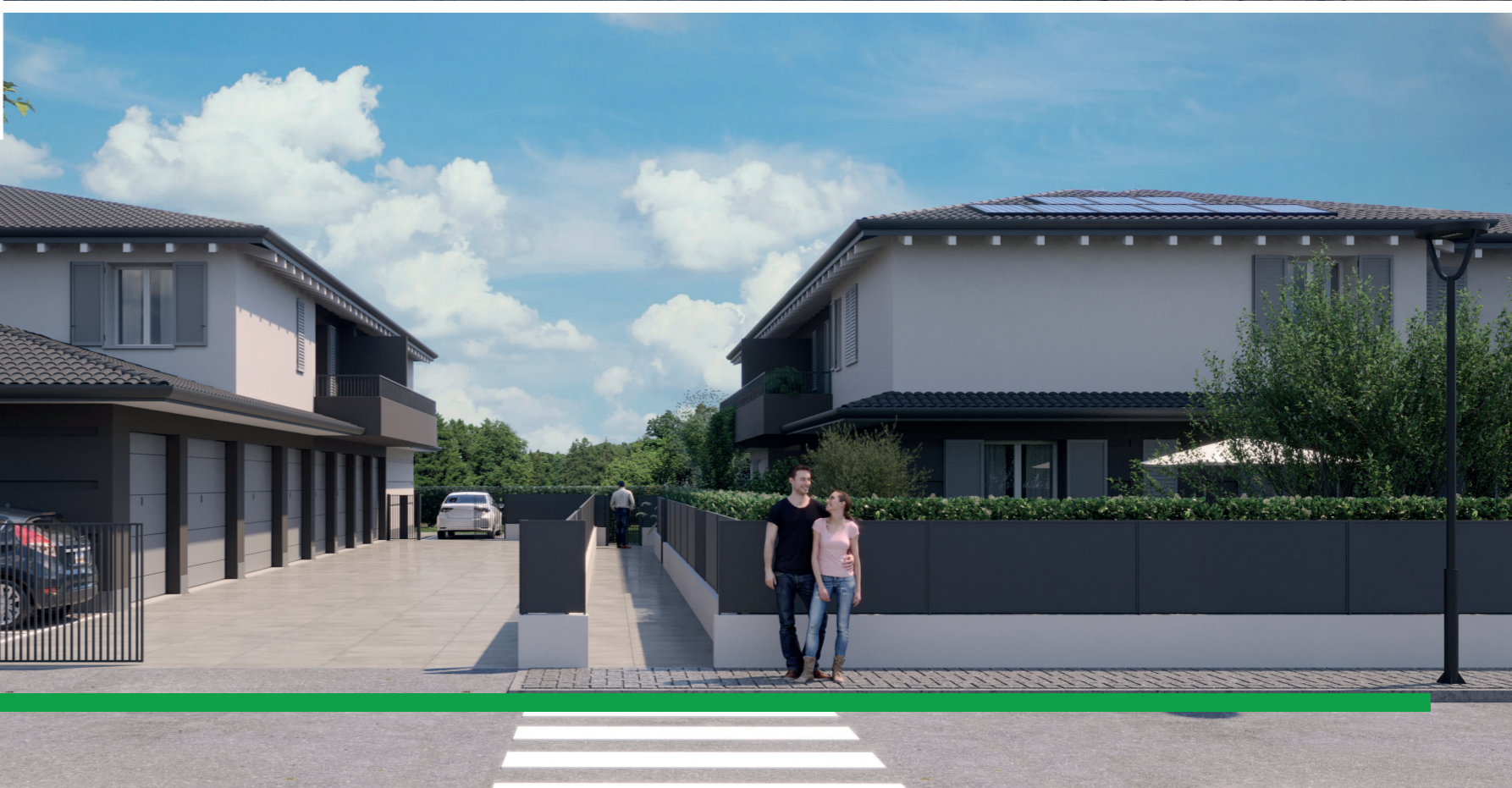
LE CORTI DI VIA LODA

VIA LODA - CASTELFRANCO EMILIA



LE CORTI DI VIA LODA

VIA LODA - CASTELFRANCO EMILIA



LE CORTI DI VIA LODA

VIA LODA - CASTELFRANCO EMILIA



PALAZZINA 1

PALAZZINA 2

VILLETTE I-L-M-N

VILLETTE E-F-G-H

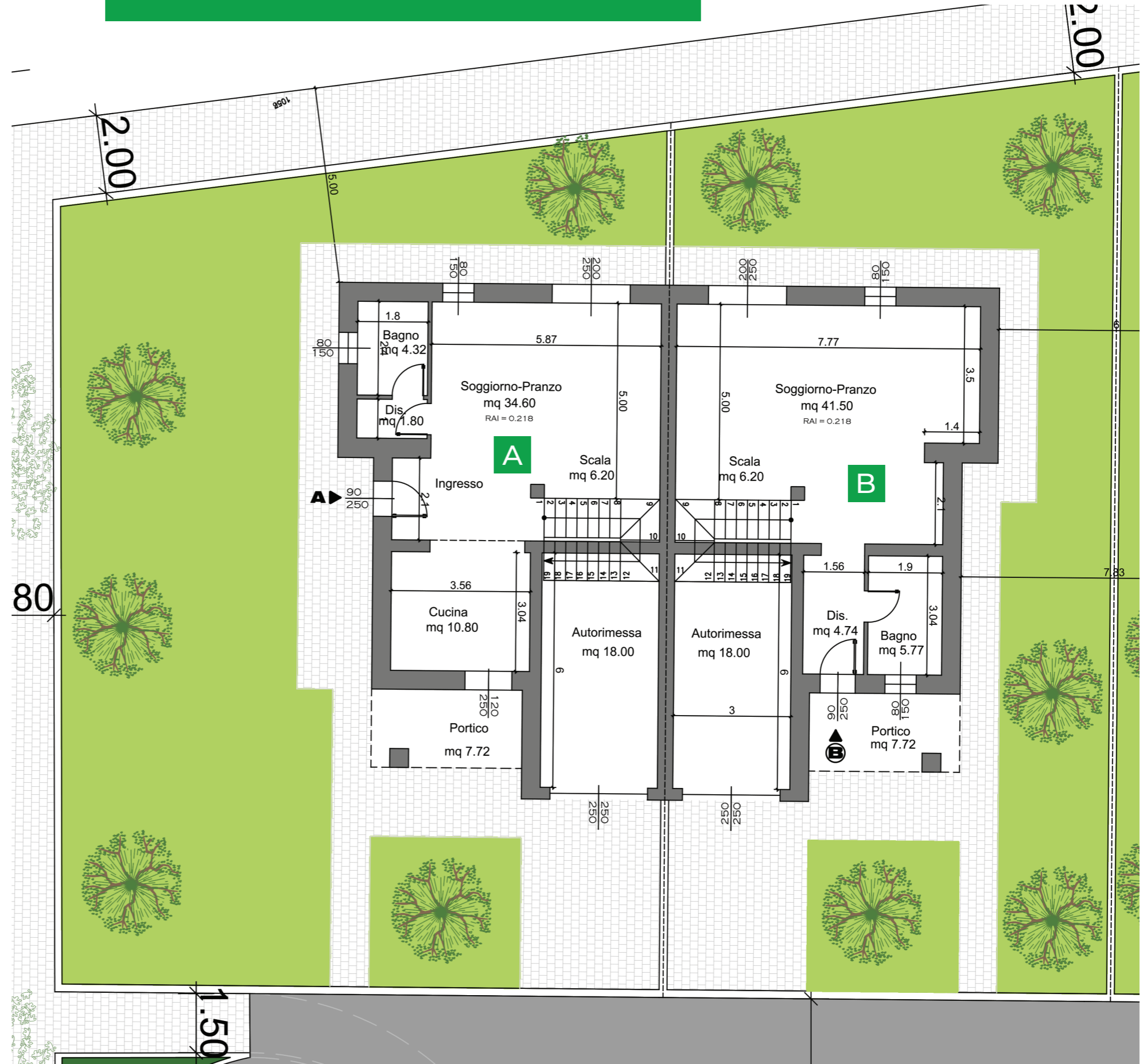
VILLETTE A-B-C-D

LE CORTI DI VIA LODA VILLETTE A-B

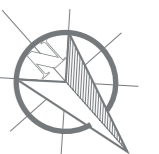
 Impresa Salatiello SRL



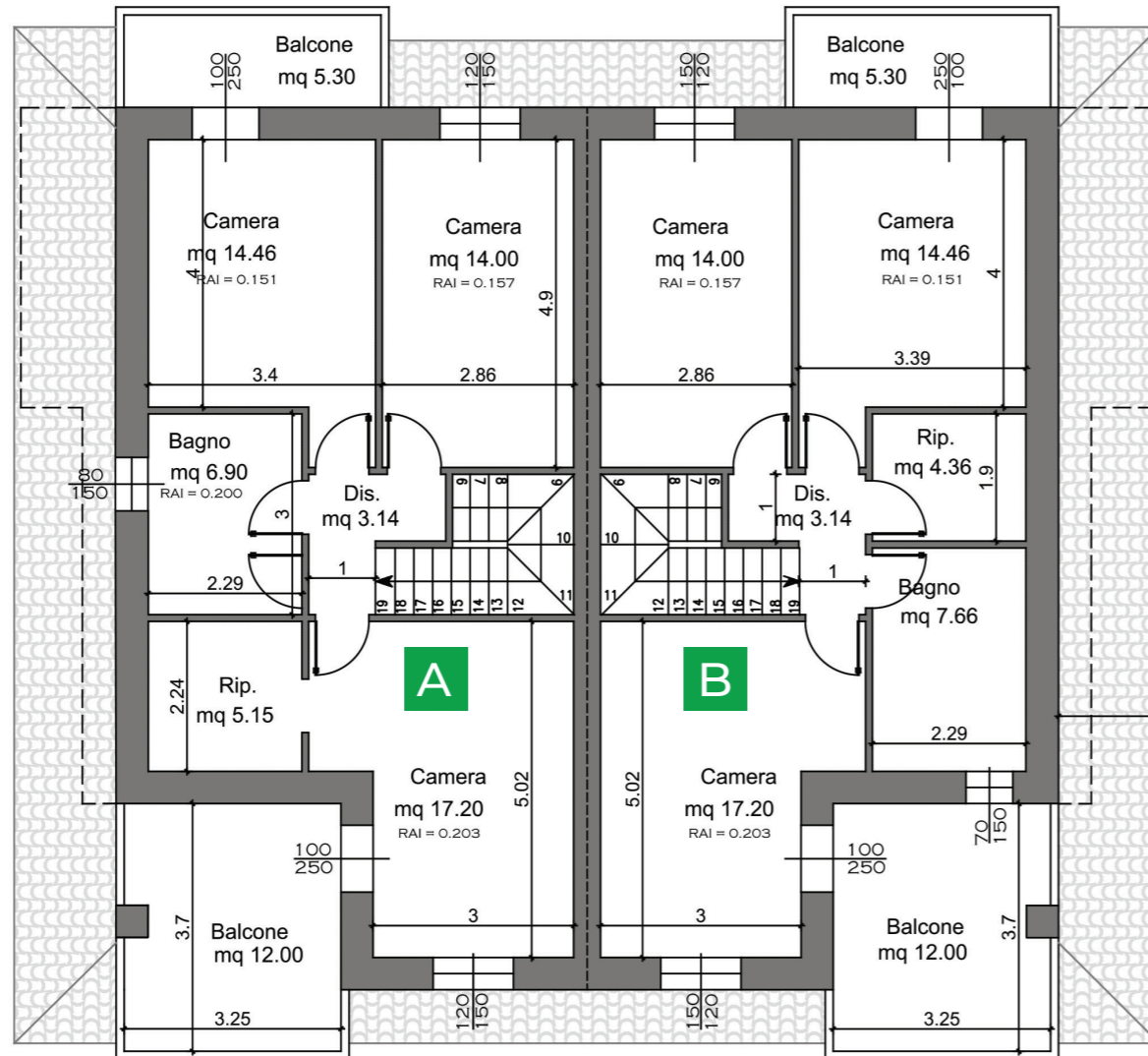
VISTA 3D



PIANTA PIANO TERRA (disegno non in scala)

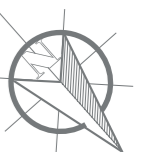


LE CORTI DI VIA LODA VILLETTE A-B

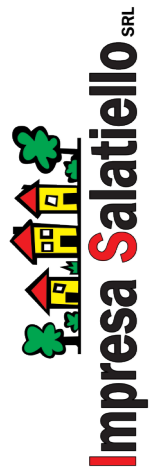


| VILLA A | | | |
|-----------------|--------|------|------------------|
| MQ | MQ | % | Sup. Commerciali |
| Appartamento | 153,51 | 100% | 153,51 |
| Balcone/portico | 26,53 | 60% | 15,92 |
| Garage | 22,5 | 60% | 13,50 |
| Giardino | 234,57 | 10% | 23,46 |
| Totale | | | 206,39 |

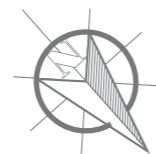
| VILLA B | | | |
|-------------------|--------|------|------------------|
| MQ | MQ | % | Sup. Commerciali |
| Appartamento | 153,51 | 100% | 153,51 |
| Balcone + portico | 26,53 | 60% | 15,92 |
| Garage | 22,5 | 60% | 13,50 |
| Giardino | 165,55 | 10% | 16,56 |
| Totale | | | 199,48 |



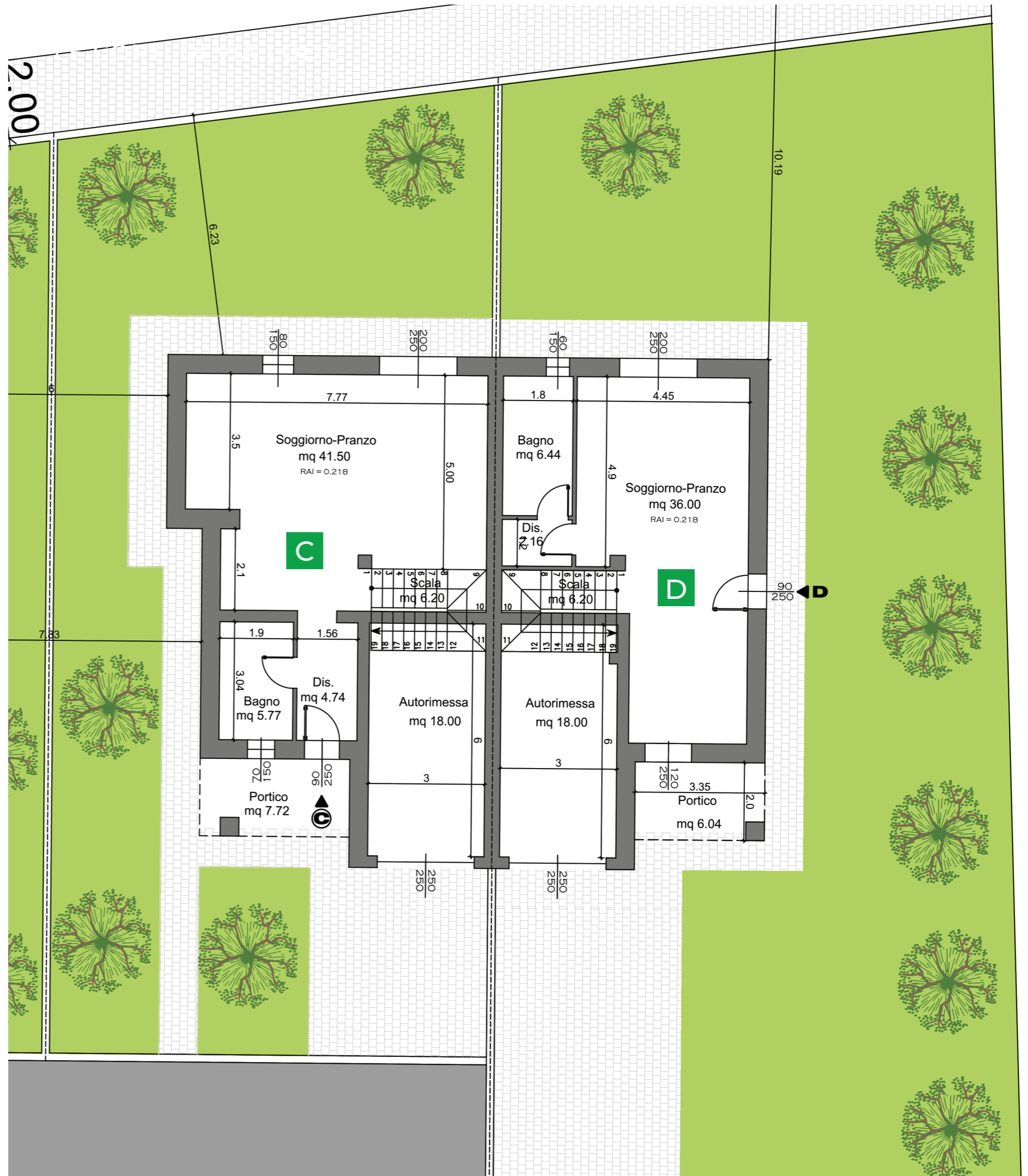
LE CORTI DI VIA LODA
VILLETTE C-D



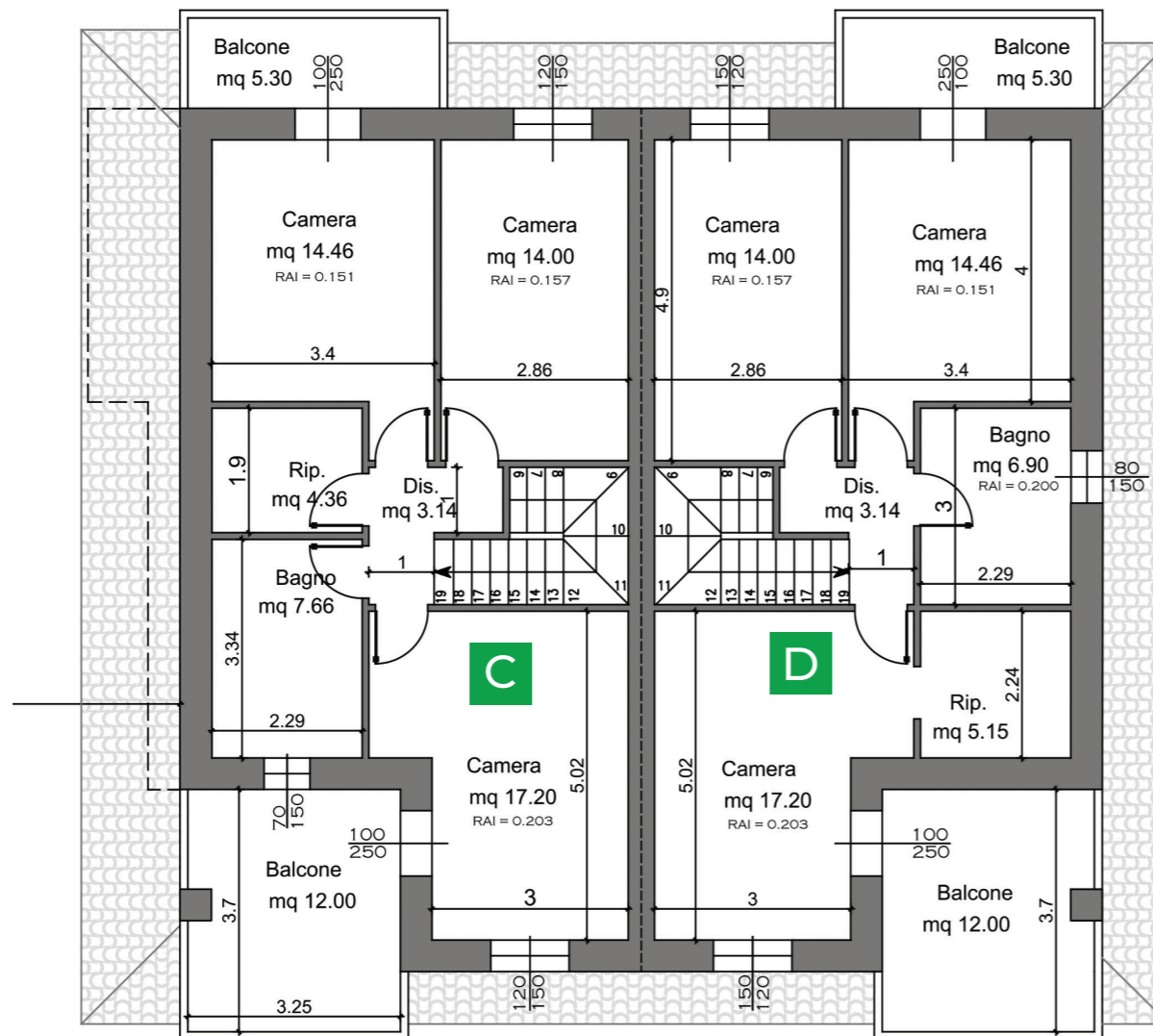
VISTA 3D



PIANTA PIANO TERRA (disegno non in scala)

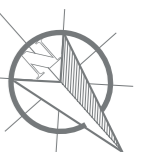


LE CORTI DI VIA LODA VILLETTE C-D



| VILLA C | | | |
|-------------------|--------|------|------------------|
| MQ | MQ | % | Sup. Commerciali |
| Appartamento | 153,51 | 100% | 153,51 |
| Balcone + portico | 26,53 | 60% | 15,92 |
| Garage | 22,5 | 60% | 13,50 |
| Giardino | 183,17 | 10% | 18,32 |
| Totale | | | 201,25 |

| VILLA D | | | |
|-------------------|-------|------|------------------|
| MQ | MQ | % | Sup. Commerciali |
| Appartamento | 144,1 | 100% | 144,10 |
| Balcone + portico | 25,1 | 60% | 15,06 |
| Garage | 22,5 | 60% | 13,50 |
| Giardino | 339,7 | 5% | 16,99 |
| Totale | | | 189,65 |



LE CORTI DI VIA LODA
VILLETTE A-B



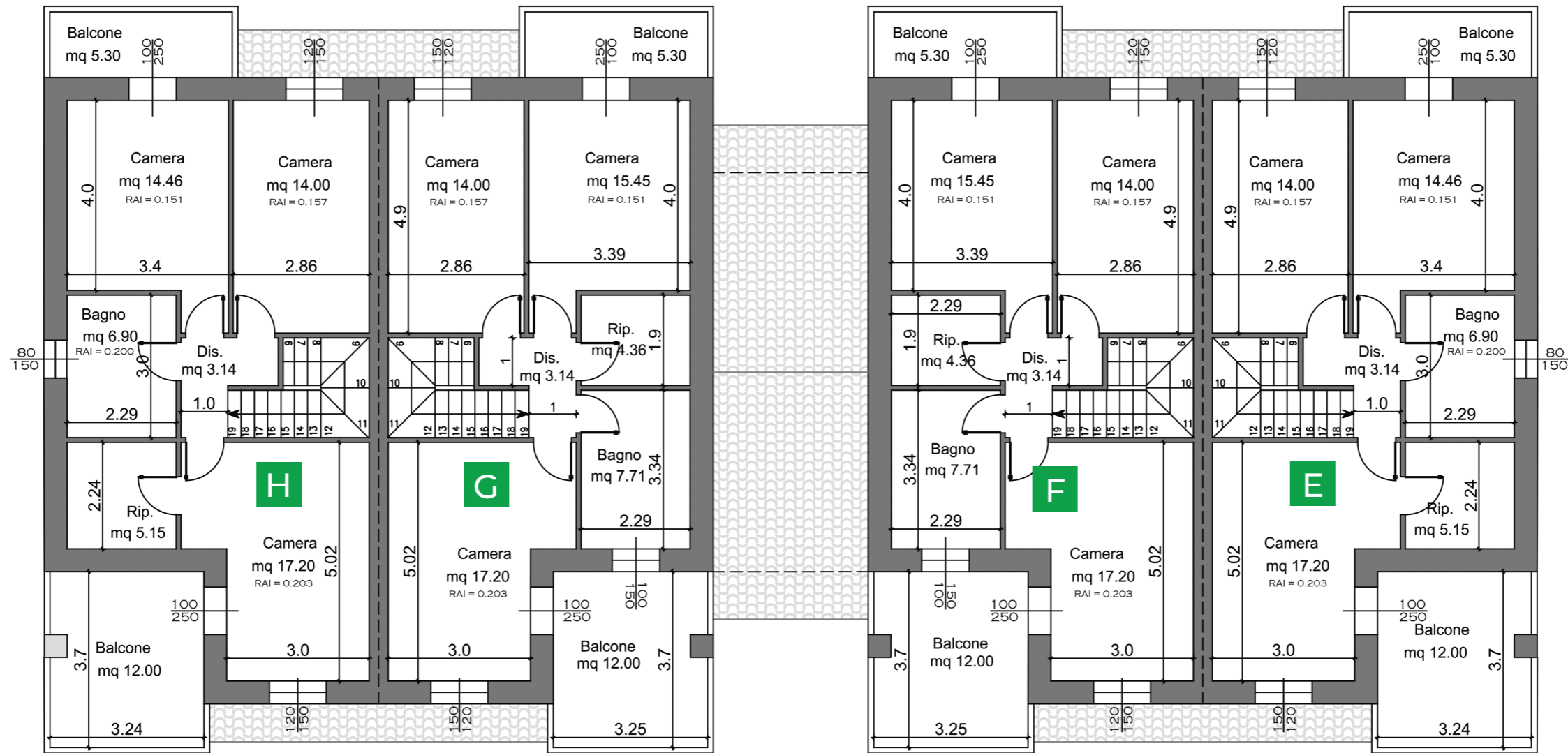
LE CORTI DI VIA LODA
VILLETTE A-B-C-D



LE CORTI DI VIA LODA VILLETTE E-F-G-H



LE CORTI DI VIA LODA VILLETTE E-F-G-H

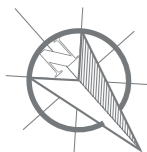


| VILLA G | | | |
|-------------------|--------|------|------------------|
| MQ | MQ | % | Sup. Commerciali |
| Appartamento | 144,1 | 100% | 144,10 |
| Balcone + portico | 37,6 | 60% | 22,56 |
| Garage | 22,5 | 60% | 13,50 |
| Giardino | 103,67 | 10% | 10,37 |
| Totale | | | 190,53 |

| VILLA E | | | |
|-------------------|--------|------|------------------|
| MQ | MQ | % | Sup. Commerciali |
| Appartamento | 144,1 | 100% | 144,10 |
| Balcone + portico | 25,1 | 60% | 15,06 |
| Garage | 22,5 | 60% | 13,50 |
| Giardino | 224,39 | 10% | 22,44 |
| Totale | | | 195,10 |

| VILLA H | | | |
|-------------------|--------|------|------------------|
| MQ | MQ | % | Sup. Commerciali |
| Appartamento | 144,1 | 100% | 144,10 |
| Balcone + portico | 25,1 | 60% | 15,06 |
| Garage | 22,5 | 60% | 13,50 |
| Giardino | 140,66 | 10% | 14,07 |
| Totale | | | 186,73 |

| VILLA F | | | |
|-------------------|--------|------|------------------|
| MQ | MQ | % | Sup. Commerciali |
| Appartamento | 144,1 | 100% | 144,10 |
| Balcone + portico | 37,6 | 60% | 22,56 |
| Garage | 22,5 | 60% | 13,50 |
| Giardino | 103,67 | 10% | 10,37 |
| Totale | | | 190,53 |



LE CORTI DI VIA LODA
VILLETTE E-F-G-H



LE CORTI DI VIA LODA
VILLETTE E-F-G-H

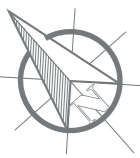


Impresa Salatiello SRL

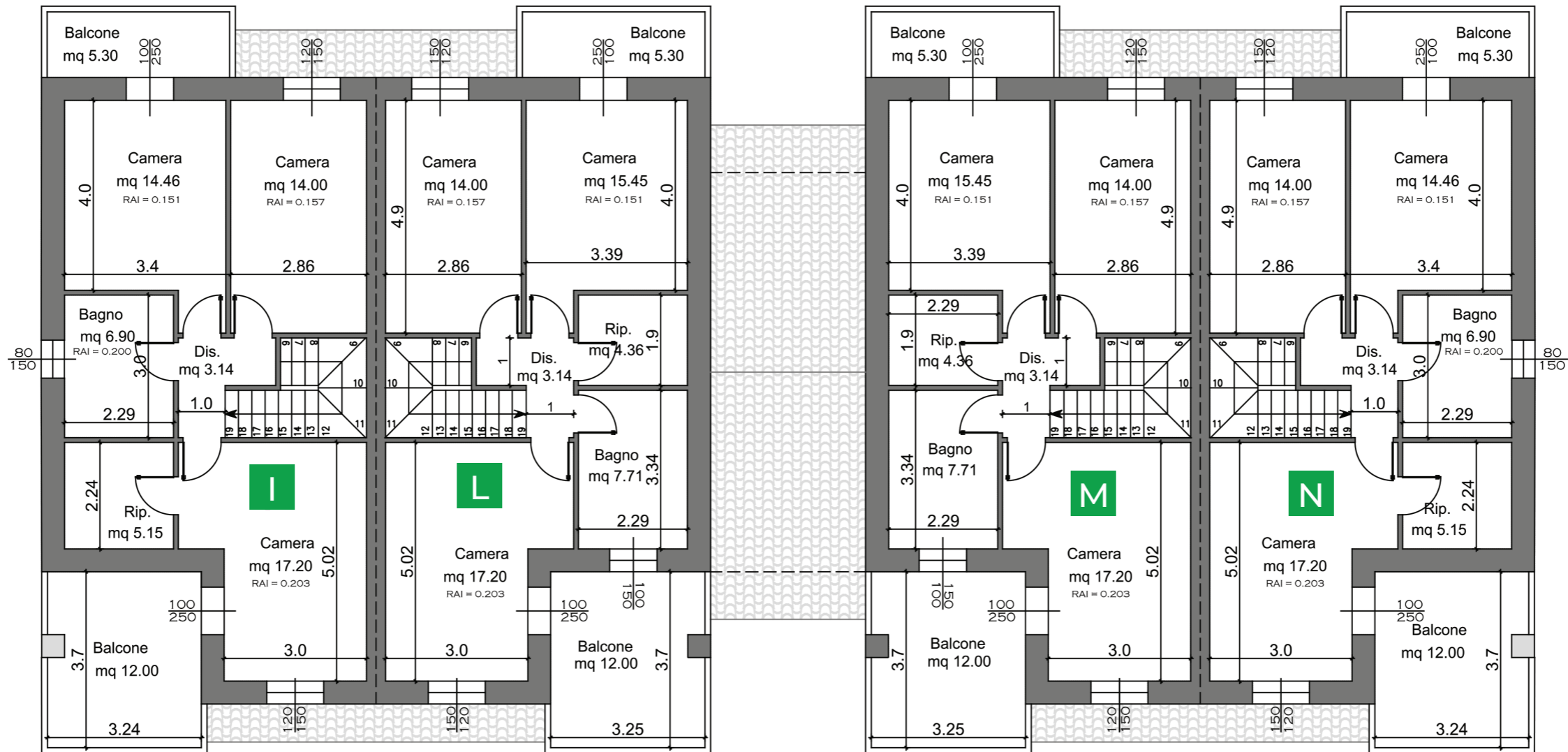
LE CORTI DI VIA LODA VILLETTE I-L-M-N



PIANTA PIANO TERRA (disegno non in scala)



LE CORTI DI VIA LODA VILLETTE I-L-M-N

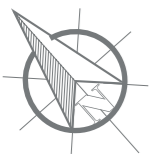


| VILLA I | | | |
|-------------------|--------|------|------------------|
| MQ | MQ | % | Sup. Commerciali |
| Appartamento | 144,1 | 100% | 144,10 |
| Balcone + portico | 25,1 | 60% | 15,06 |
| Garage | 22,5 | 60% | 13,50 |
| Giardino | 225,87 | 10% | 22,59 |
| Totale | | | 195,25 |

| VILLA M | | | |
|-------------------|--------|------|------------------|
| MQ | MQ | % | Sup. Commerciali |
| Appartamento | 144,1 | 100% | 144,10 |
| Balcone + portico | 37,6 | 60% | 22,56 |
| Garage | 22,5 | 60% | 13,50 |
| Giardino | 103,61 | 10% | 10,36 |
| Totale | | | 190,52 |

| VILLA L | | | |
|-------------------|--------|------|------------------|
| MQ | MQ | % | Sup. Commerciali |
| Appartamento | 144,1 | 100% | 144,10 |
| Balcone + portico | 37,6 | 60% | 22,56 |
| Garage | 22,5 | 60% | 13,50 |
| Giardino | 103,61 | 10% | 10,36 |
| Totale | | | 190,52 |

| VILLA N | | | |
|-------------------|--------|------|------------------|
| MQ | MQ | % | Sup. Commerciali |
| Appartamento | 144,1 | 100% | 144,10 |
| Balcone + portico | 25,1 | 60% | 15,06 |
| Garage | 22,5 | 60% | 13,50 |
| Giardino | 155,87 | 10% | 15,59 |
| Totale | | | 188,25 |



LE CORTI DI VIA LODA
VILLETTE I-L-M-N



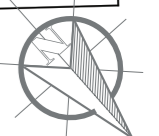
LE CORTI DI VIA LODA
VILLETTE I-L-M-N



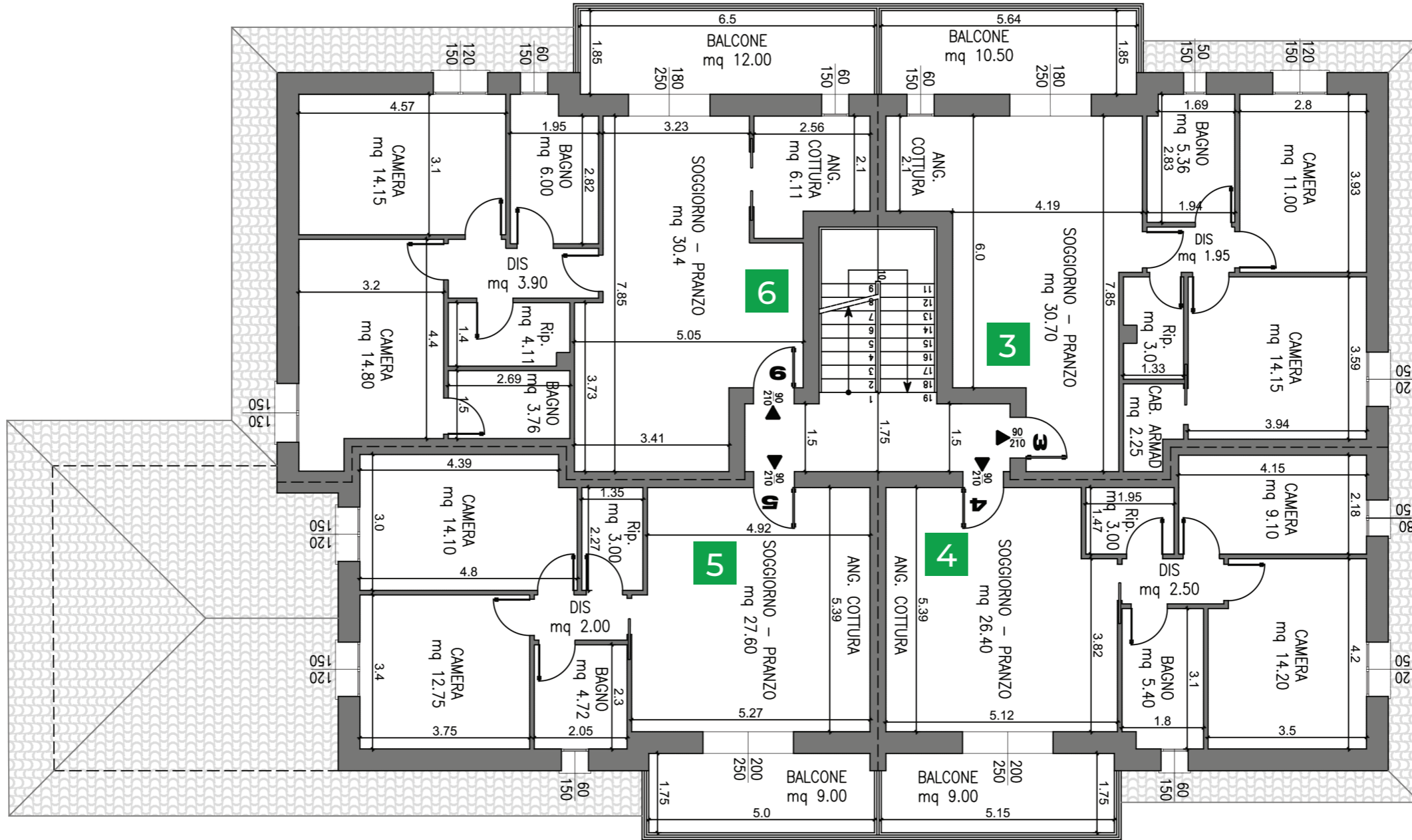
LE CORTI DI VIA LODA PALAZZINA 1



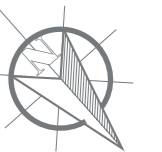
PIANTA PIANO TERRA (disegno non in scala)



LE CORTI DI VIA LODA PALAZZINA 1



PIANTA PIANO PRIMO (disegno non in scala)



LE CORTI DI VIA LODA PALAZZINA 1

| PALAZZINA 1 | | | |
|----------------|--------|------|------------------|
| Destinazione | MQ | % | Sup. Commerciali |
| Appartamento 1 | 121,4 | 100% | 121,40 |
| Portico | 12,06 | 60% | 7,24 |
| Giardino | 263,42 | 8% | 21,07 |
| Garage 1 | 18,17 | 60% | 10,90 |
| Totale | | | 160,61 |

| Destinazione | MQ | % | Sup. Commerciali |
|----------------|--------|------|------------------|
| Appartamento 2 | 90,4 | 100% | 90,40 |
| Garage 8 | 21,4 | 60% | 12,84 |
| Portico | 8,2 | 60% | 4,92 |
| Giardino | 184,46 | 10% | 18,45 |
| Totale | | | 126,61 |

| Destinazione | MQ | % | Sup. Commerciali |
|----------------|-------|------|------------------|
| Appartamento 3 | 85,12 | 100% | 85,12 |
| Balcone | 11,64 | 60% | 6,98 |
| Garage 2 | 17,3 | 60% | 10,38 |
| Totale | | | 102,48 |

| Destinazione | MQ | % | Sup. Commerciali |
|----------------|-------|------|------------------|
| Appartamento 4 | 74,45 | 100% | 74,45 |
| Balcone | 10,08 | 60% | 6,05 |
| Garage 3 | 17,3 | 60% | 10,38 |
| Totale | | | 90,88 |

| Destinazione | MQ | % | Sup. Commerciali |
|----------------|-------|------|------------------|
| Appartamento 5 | 79 | 100% | 79,00 |
| Balcone | 10,08 | 60% | 6,05 |
| Garage 4 | 17,3 | 60% | 10,38 |
| Totale | | | 95,43 |

| Destinazione | MQ | % | Sup. Commerciali |
|----------------|-------|------|------------------|
| Appartamento 6 | 102,7 | 100% | 102,70 |
| Balcone | 13,4 | 60% | 8,04 |
| Garage 5 | 17,3 | 60% | 10,38 |
| Totale | | | 121,12 |

| MQ | MQ | % | Sup. Commerciali |
|---------------|------|-----|------------------|
| Parcheggio 1 | 12,5 | 50% | 6,25 |
| Totale | | | 6,25 |

| MQ | MQ | % | Sup. Commerciali |
|---------------|------|-----|------------------|
| Parcheggio 2 | 12,5 | 50% | 6,25 |
| Totale | | | 6,25 |



LE CORTI DI VIA LODA
PALAZZINA 1



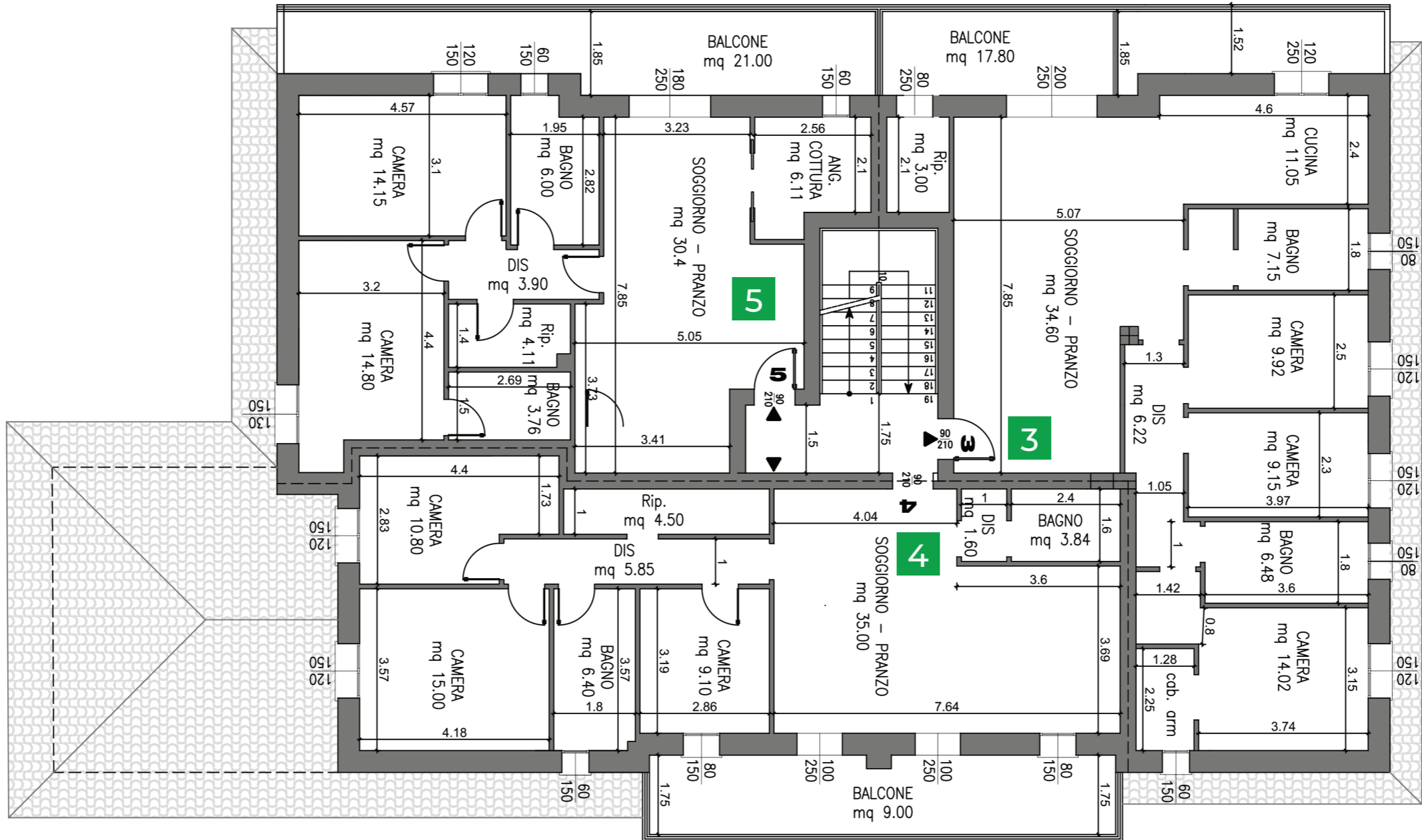
LE CORTI DI VIA LODA PALAZZINA 2



PIANTA PIANO TERRA (disegno non in scala)



LE CORTI DI VIA LODA PALAZZINA 2



PIANTA PIANO PRIMO (disegno non in scala)



LE CORTI DI VIA LODA PALAZZINA 2

| PALAZZINA 2 | | | |
|----------------|--------|------|------------------|
| Destinazione | MQ | % | Sup. Commerciali |
| Appartamento 1 | 121,4 | 100% | 121,40 |
| Portico | 12,06 | 60% | 7,24 |
| Giardino | 250,85 | 8% | 20,07 |
| Garage 1 | 18,17 | 60% | 10,90 |
| Totale | | | 159,61 |

| Destinazione | MQ | % | Sup. Commerciali |
|----------------|--------|------|------------------|
| Appartamento 2 | 90,4 | 100% | 90,40 |
| Portico | 8,2 | 60% | 4,92 |
| Garage 8 | 21,4 | 60% | 12,84 |
| Giardino | 176,15 | 10% | 17,62 |
| Totale | | | 125,78 |

| MQ | MQ | % | Sup. Commerciali |
|----------------|--------|------|------------------|
| Appartamento 3 | 128,37 | 100% | 128,37 |
| Balcone | 19,88 | 60% | 11,93 |
| Garage 3 | 17,3 | 60% | 10,38 |
| Totale | | | 150,68 |

| MQ | MQ | % | Sup. Commerciali |
|----------------|--------|------|------------------|
| Appartamento 4 | 111,82 | 100% | 111,82 |
| Balcone | 20,1 | 60% | 12,06 |
| Garage 4 | 17,3 | 60% | 10,38 |
| Totale | | | 134,26 |

| MQ | MQ | % | Sup. Commerciali |
|----------------|-------|------|------------------|
| Appartamento 5 | 102,7 | 100% | 102,70 |
| Balcone | 23,33 | 60% | 14,00 |
| Garage 5 | 17,3 | 60% | 10,38 |
| Totale | | | 127,08 |

| MQ | MQ | % | Sup. Commerciali |
|---------------|------|-----|------------------|
| Parcheggio 1 | 12,5 | 50% | 6,25 |
| Totale | | | 6,25 |

| MQ | MQ | % | Sup. Commerciali |
|---------------|------|-----|------------------|
| Parcheggio 2 | 12,5 | 50% | 6,25 |
| Totale | | | 6,25 |

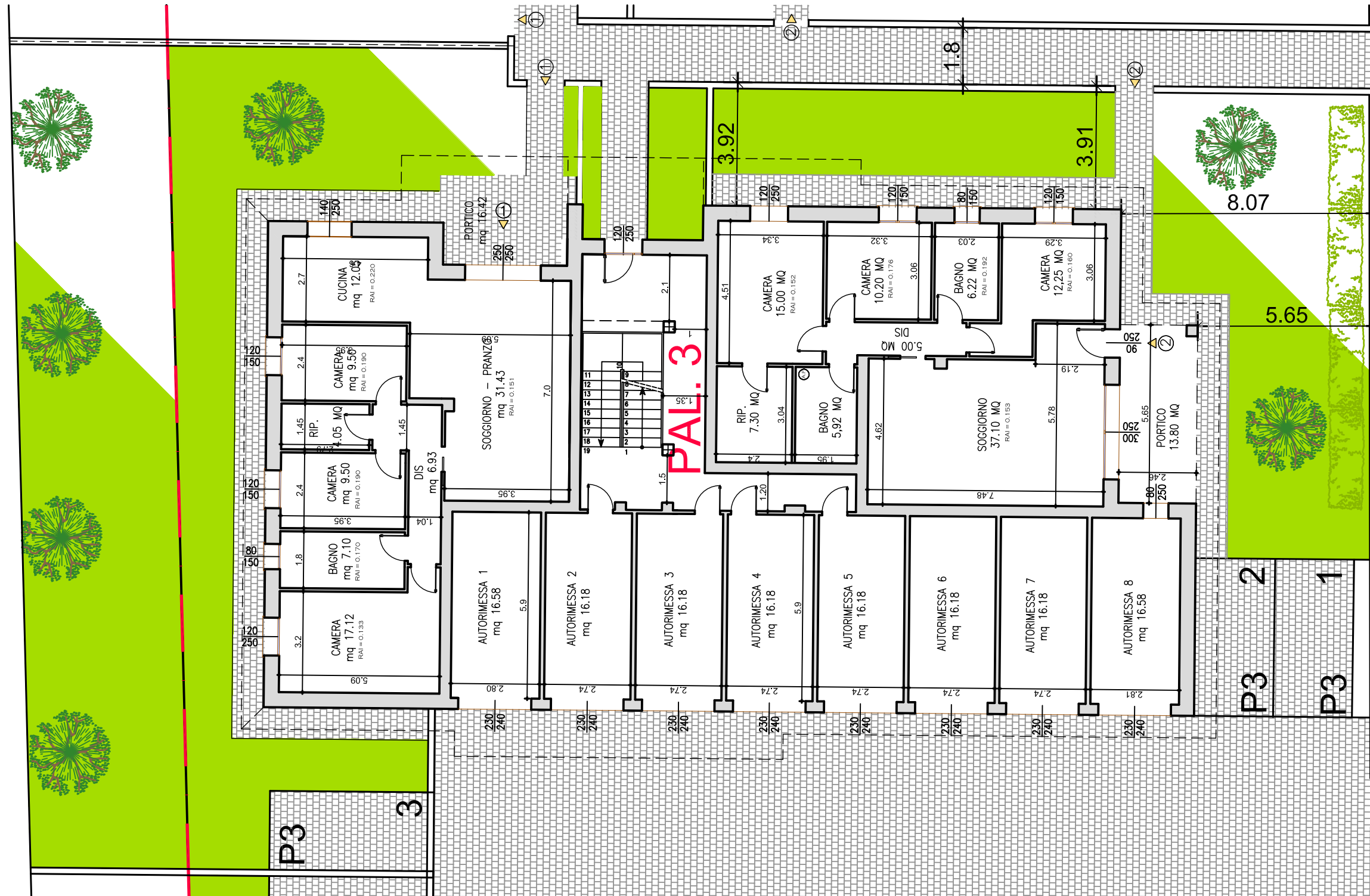
| MQ | MQ | % | Sup. Commerciali |
|---------------|------|-----|------------------|
| AUTORIMESSA 2 | 17,3 | 60% | 10,38 |
| Totale | | | 10,38 |

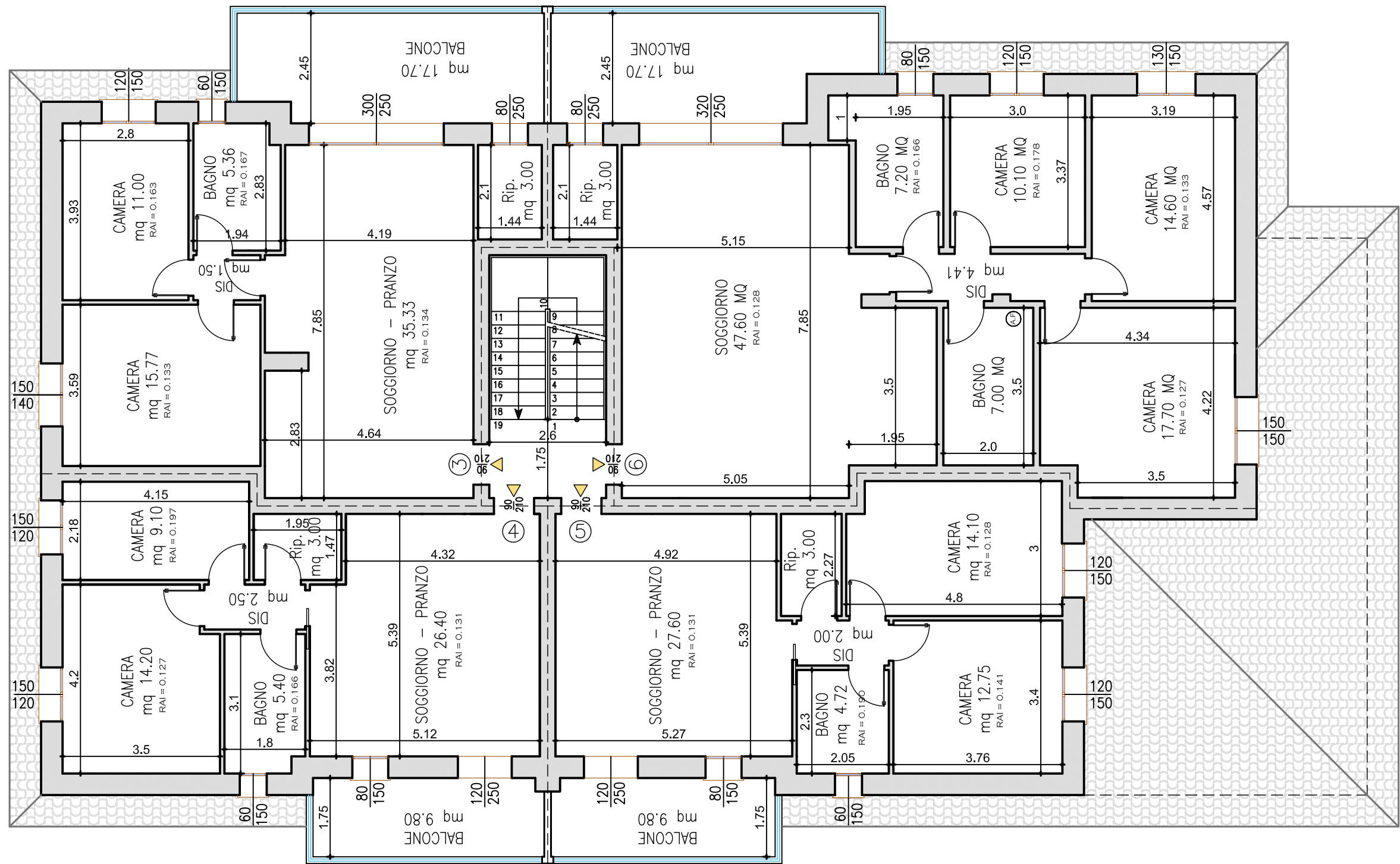


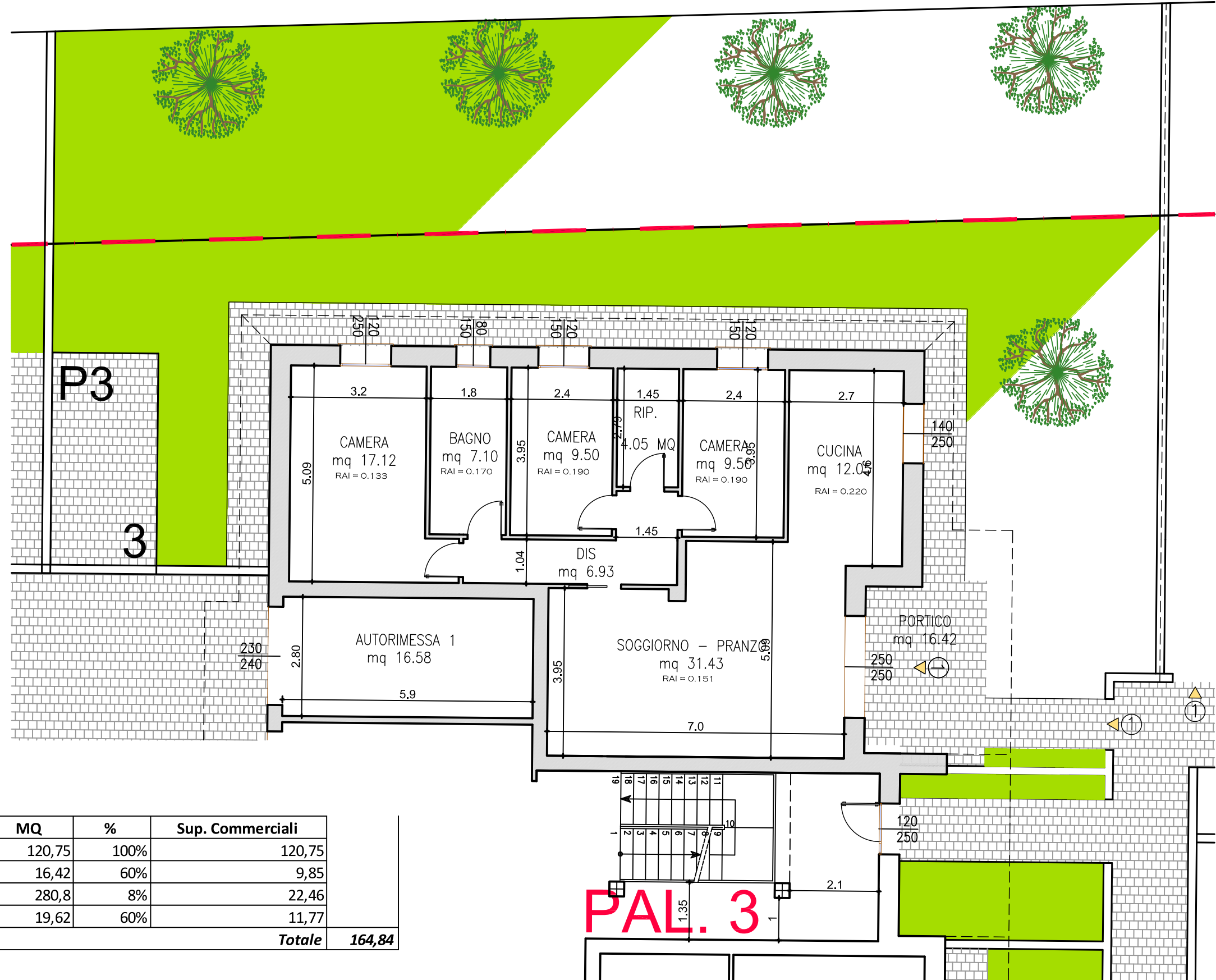
LE CORTI DI VIA LODA
PALAZZINA 2





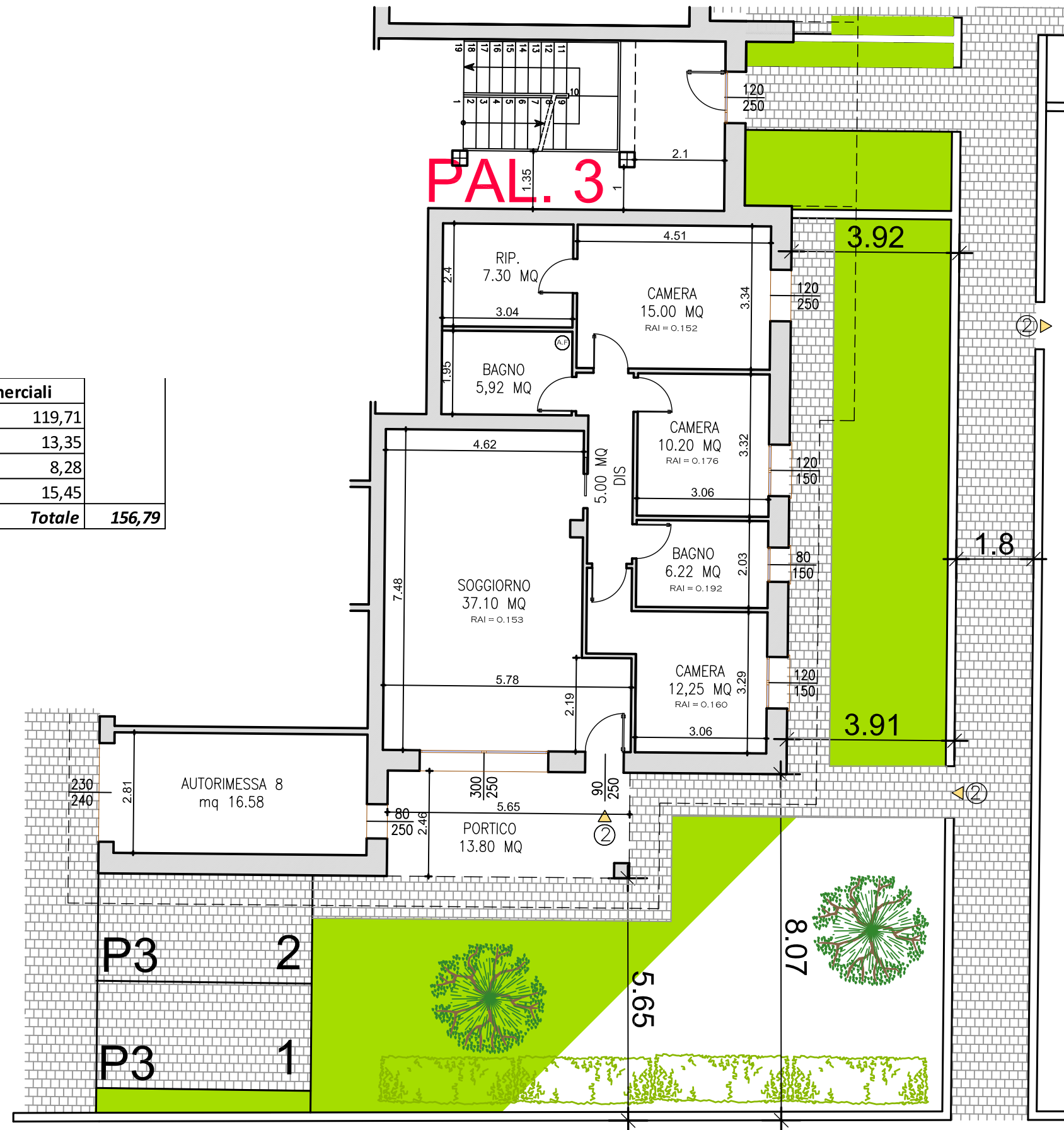




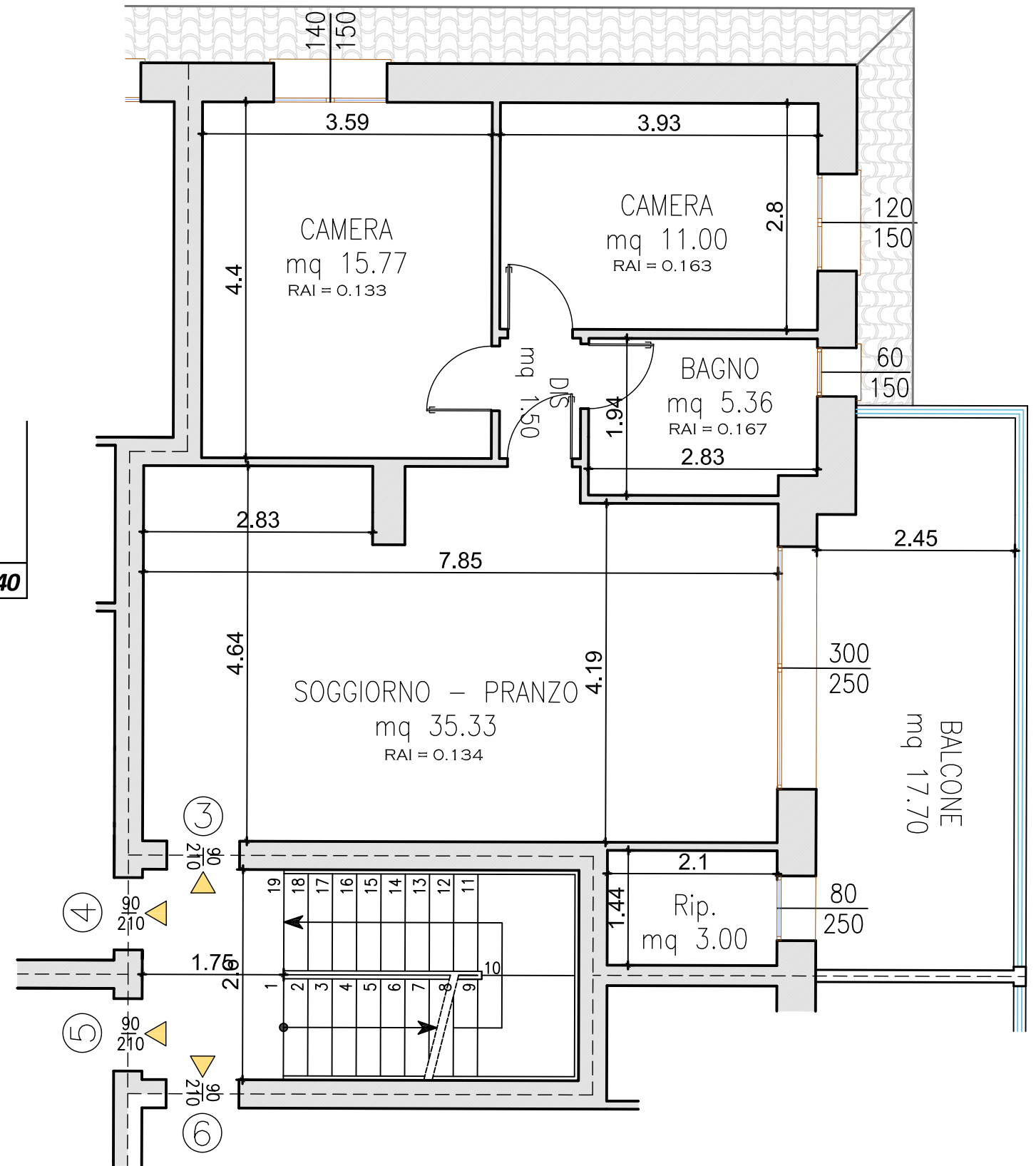


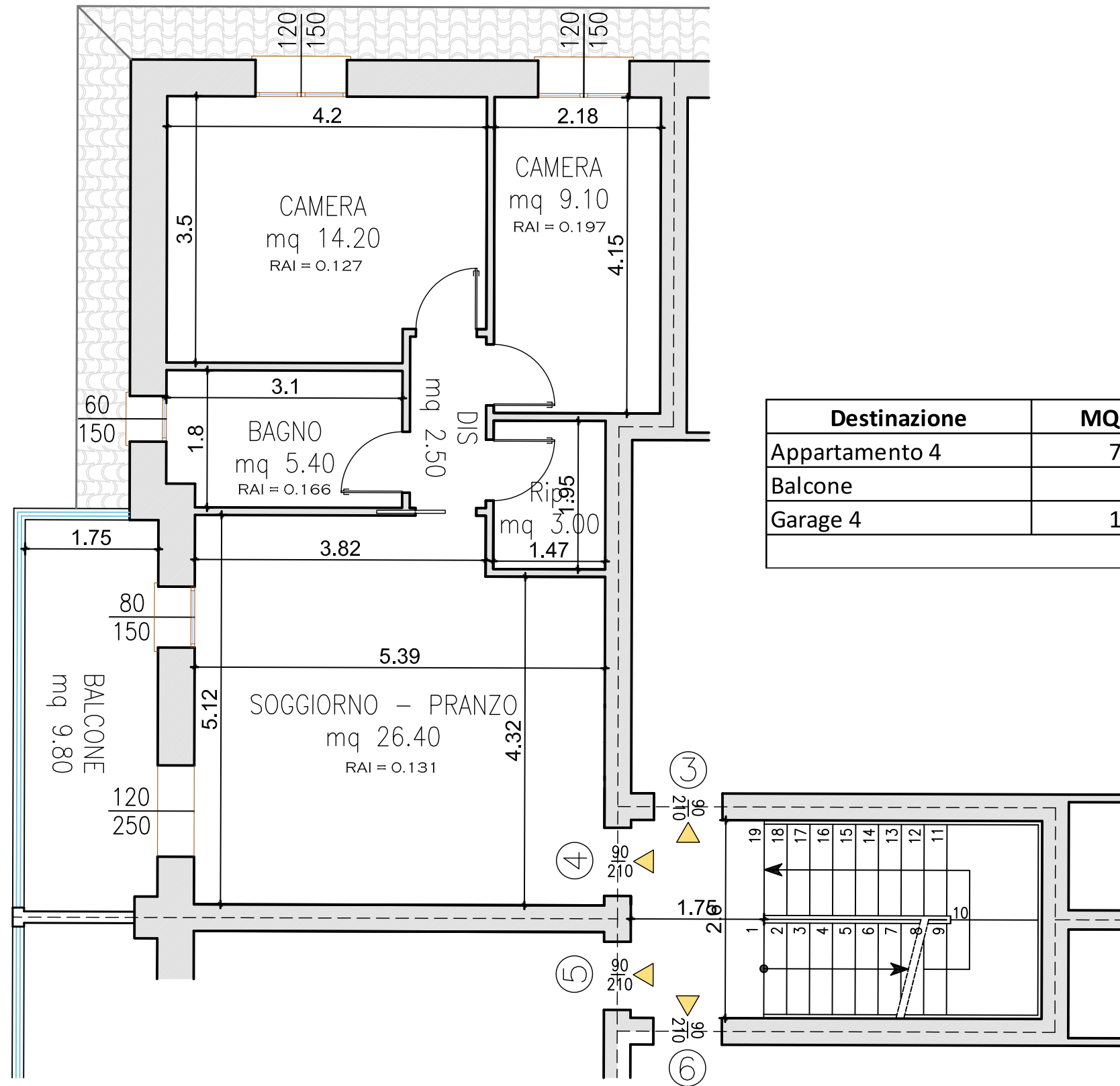
| Destinazione | MQ | % | Sup. Commerciali |
|----------------|---------------|------|------------------|
| Appartamento 1 | 120,75 | 100% | 120,75 |
| Portico | 16,42 | 60% | 9,85 |
| Giardino | 280,8 | 8% | 22,46 |
| Garage 1 | 19,62 | 60% | 11,77 |
| Totale | 164,84 | | |

| Destinazione | MQ | % | Sup. Commerciali |
|----------------|---------------|------|------------------|
| Appartamento 2 | 119,71 | 100% | 119,71 |
| Garage 8 | 22,25 | 60% | 13,35 |
| Portico | 13,8 | 60% | 8,28 |
| Giardino | 154,5 | 10% | 15,45 |
| Totale | 156,79 | | |

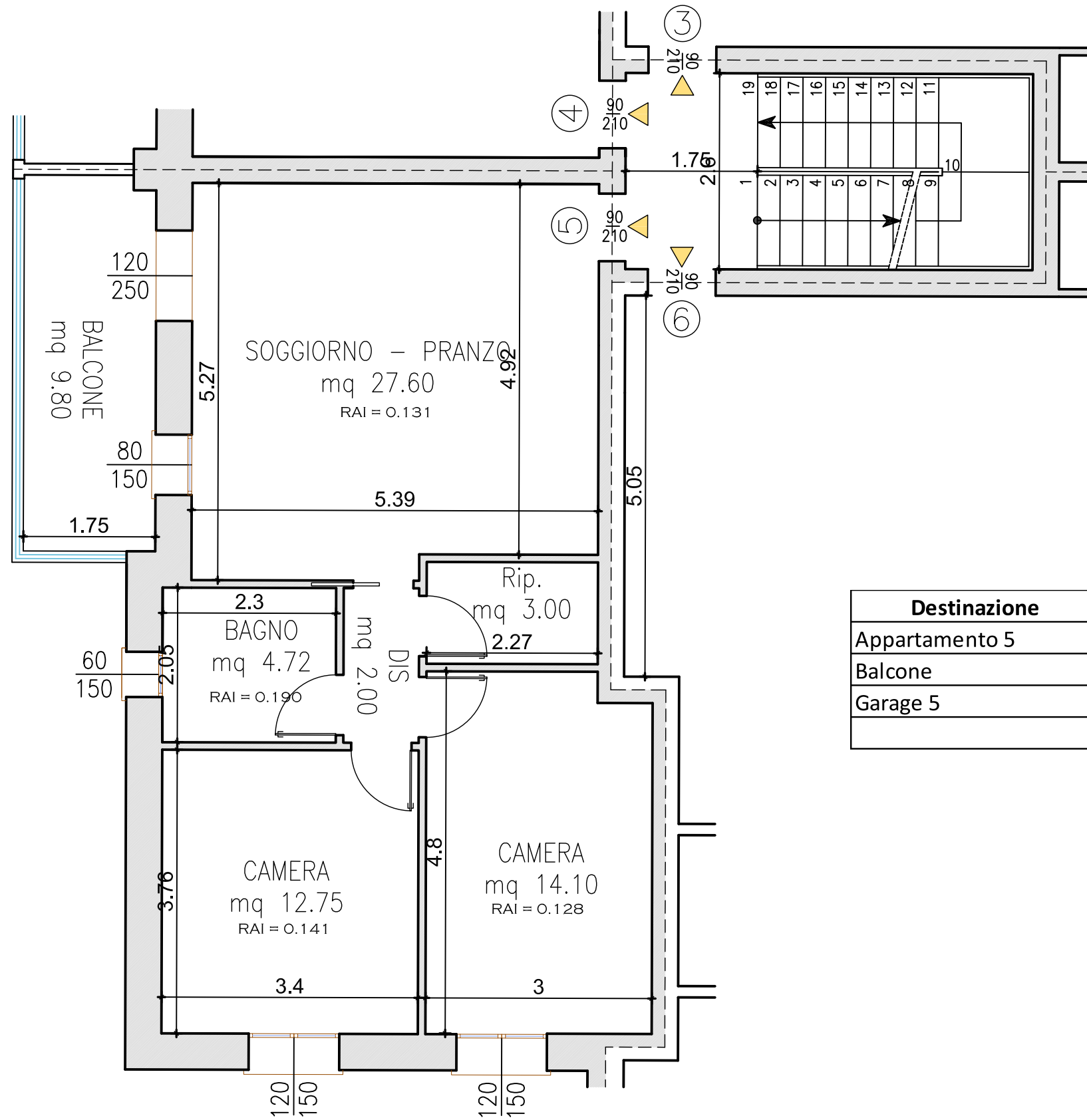


| Destinazione | MQ | % | Sup. Commerciali |
|----------------|-------|------|------------------|
| Appartamento 3 | 87,6 | 100% | 87,60 |
| Balcone | 17,7 | 60% | 10,62 |
| Garage 3 | 18,63 | 60% | 11,18 |
| Totale | | | 109,40 |



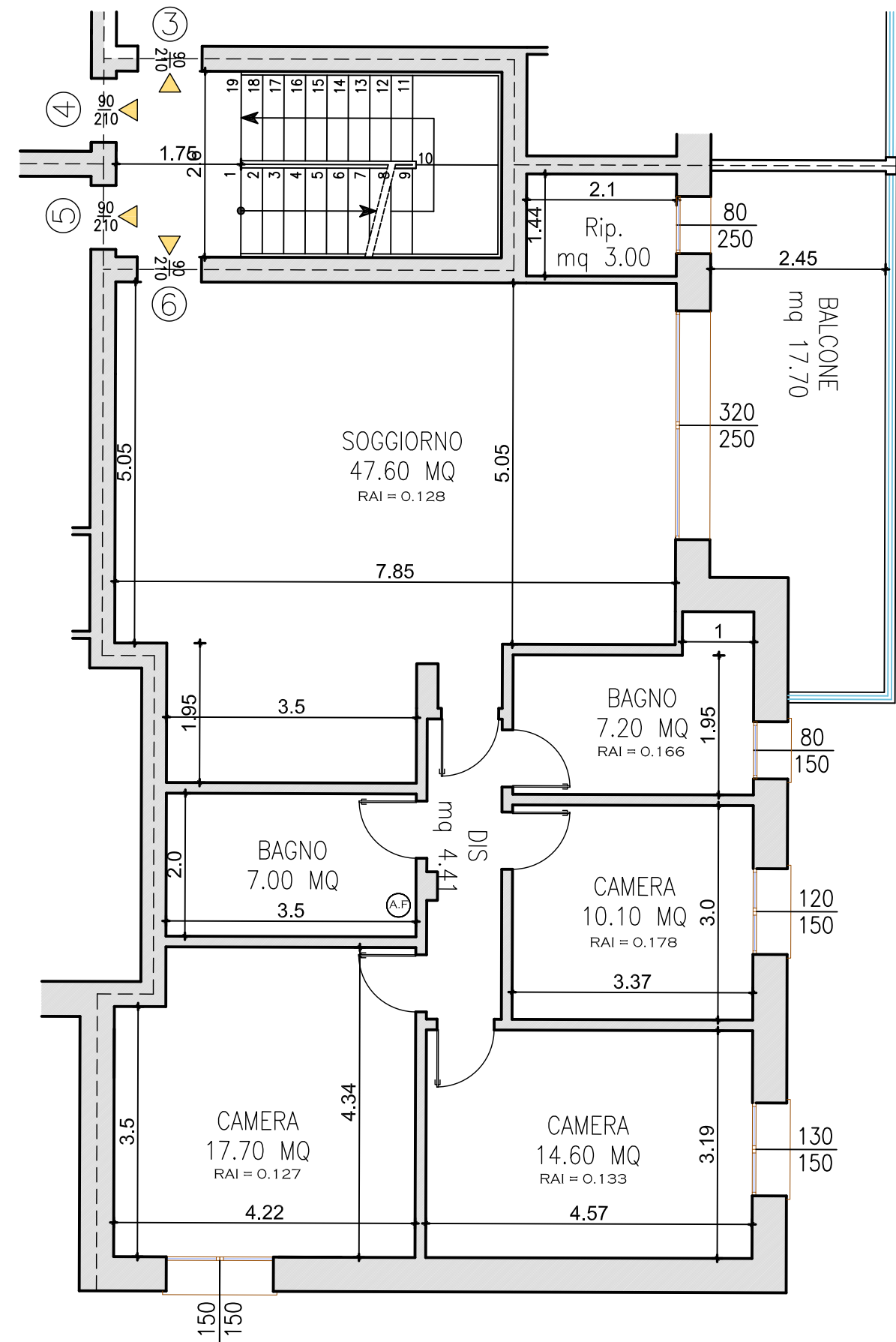


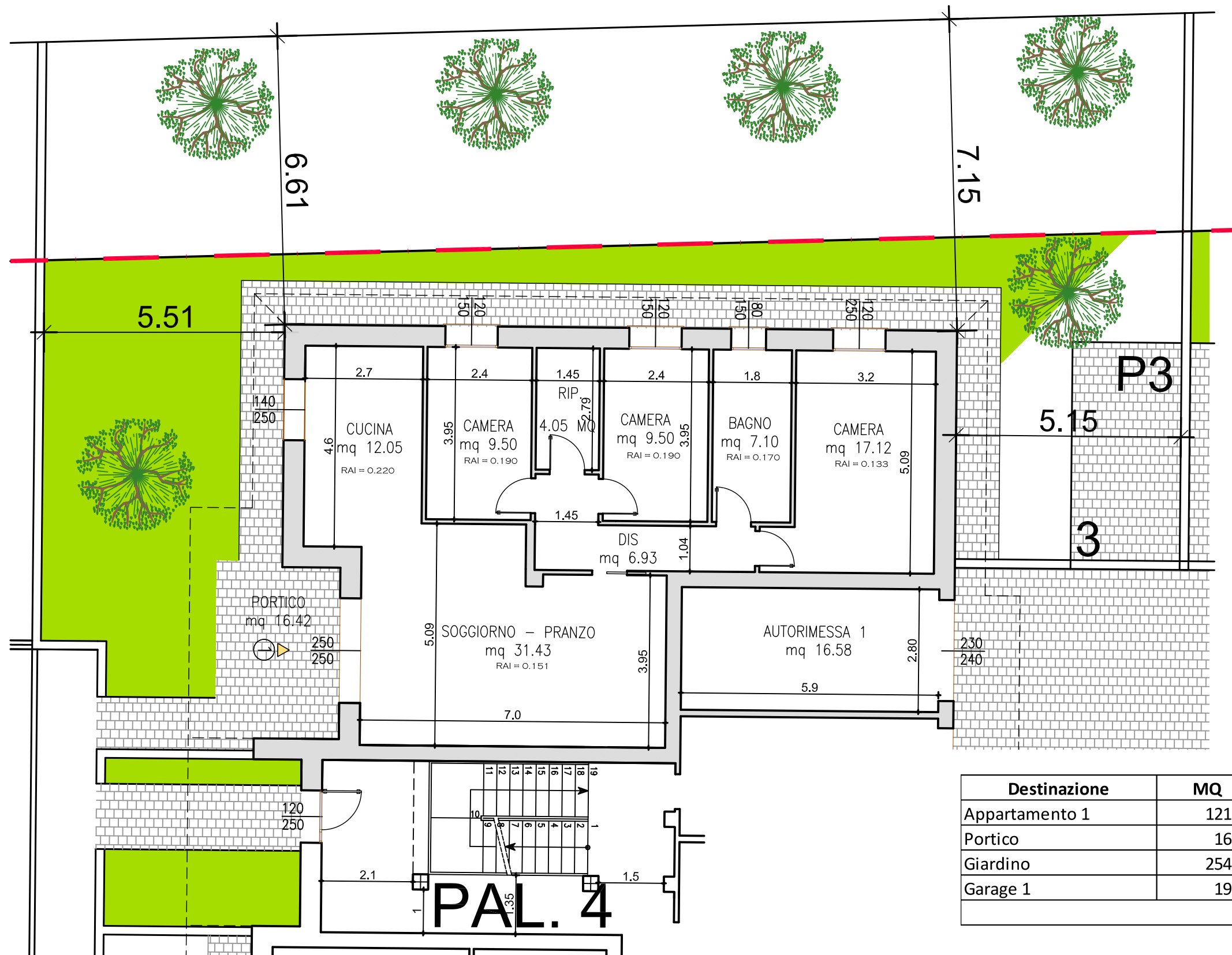
| Destinazione | MQ | % | Sup. Commerciali |
|----------------|-------|------|------------------|
| Appartamento 4 | 74,45 | 100% | 74,45 |
| Balcone | 9,8 | 60% | 5,88 |
| Garage 4 | 18,63 | 60% | 11,18 |
| Totale | | | 91,51 |



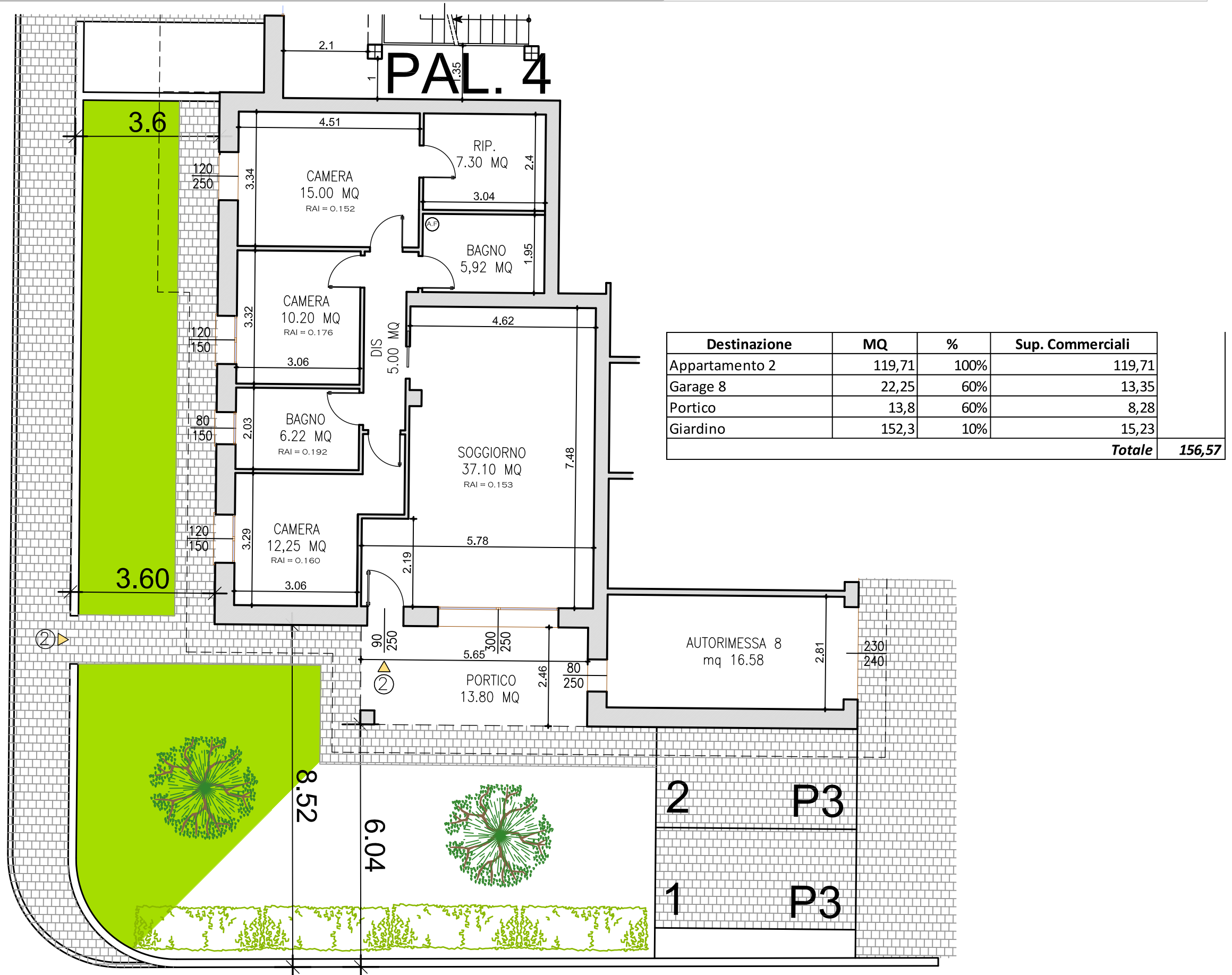
| Destinazione | MQ | % | Sup. Commerciali |
|----------------|-------|------|------------------|
| Appartamento 5 | 79,1 | 100% | 79,10 |
| Balcone | 9,8 | 60% | 5,88 |
| Garage 5 | 18,63 | 60% | 11,18 |
| Totale | | | 96,16 |

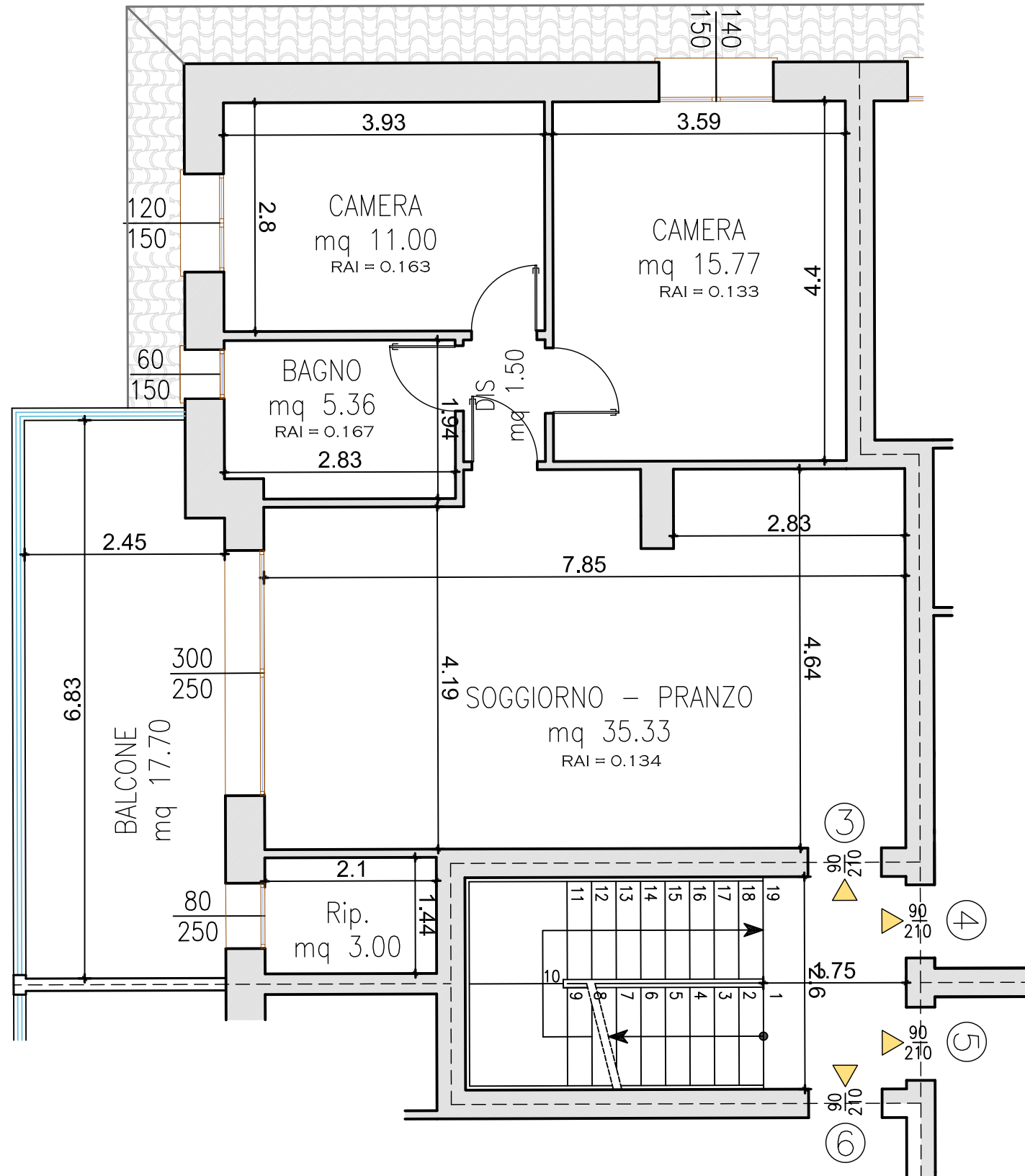
| Destinazione | MQ | % | Sup. Commerciali |
|----------------|---------------|------|------------------|
| Appartamento 6 | 135,42 | 100% | 135,42 |
| Balcone | 17,7 | 60% | 10,62 |
| Garage 6 | 18,63 | 60% | 11,18 |
| Totale | 157,22 | | |





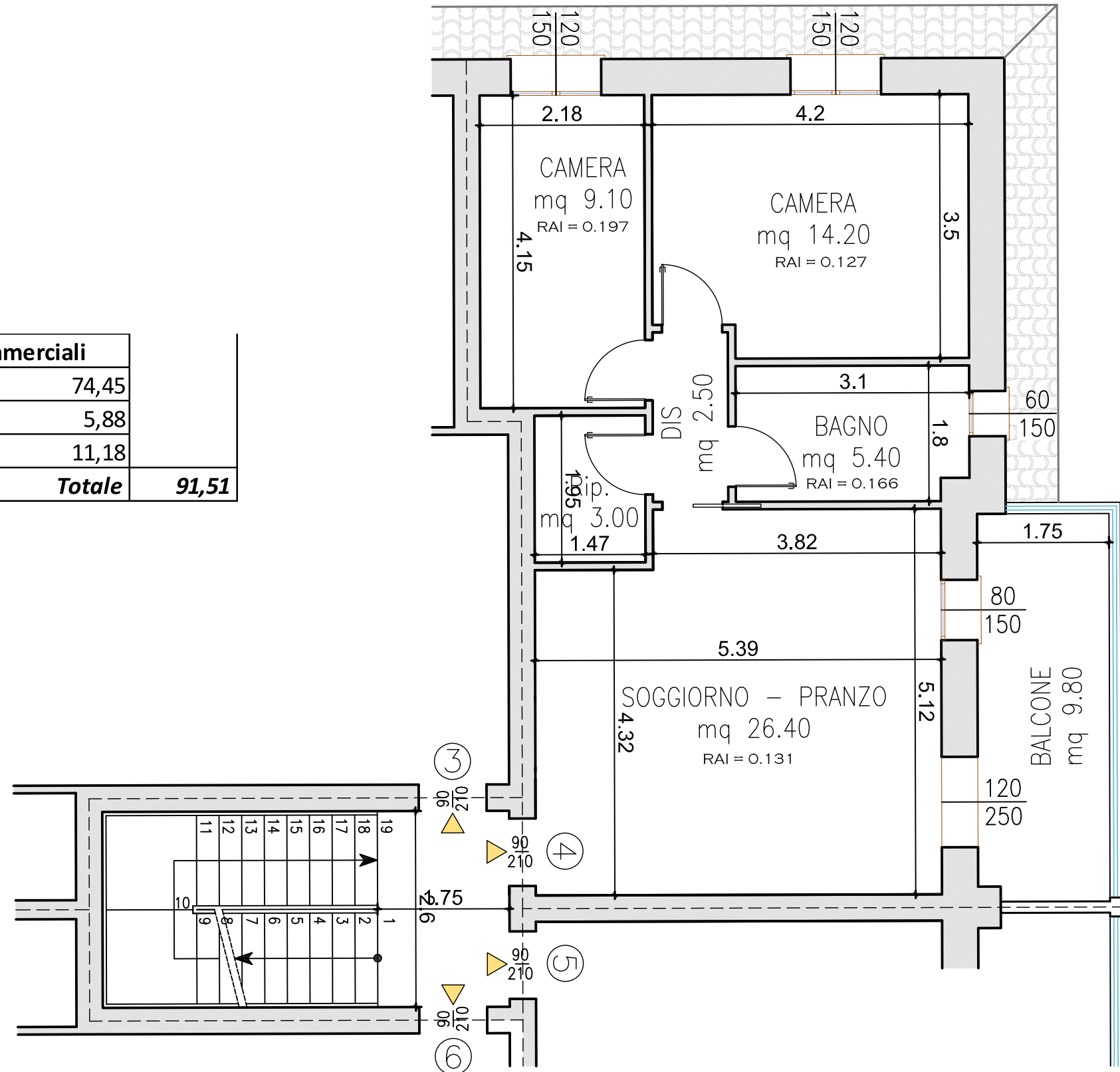
| Destinazione | MQ | % | Sup. Commerciali |
|----------------|--------|------|------------------|
| Appartamento 1 | 121,75 | 100% | 121,75 |
| Portico | 16,42 | 60% | 9,85 |
| Giardino | 254,82 | 8% | 20,39 |
| Garage 1 | 19,62 | 60% | 11,77 |
| Totale | | | 163,76 |

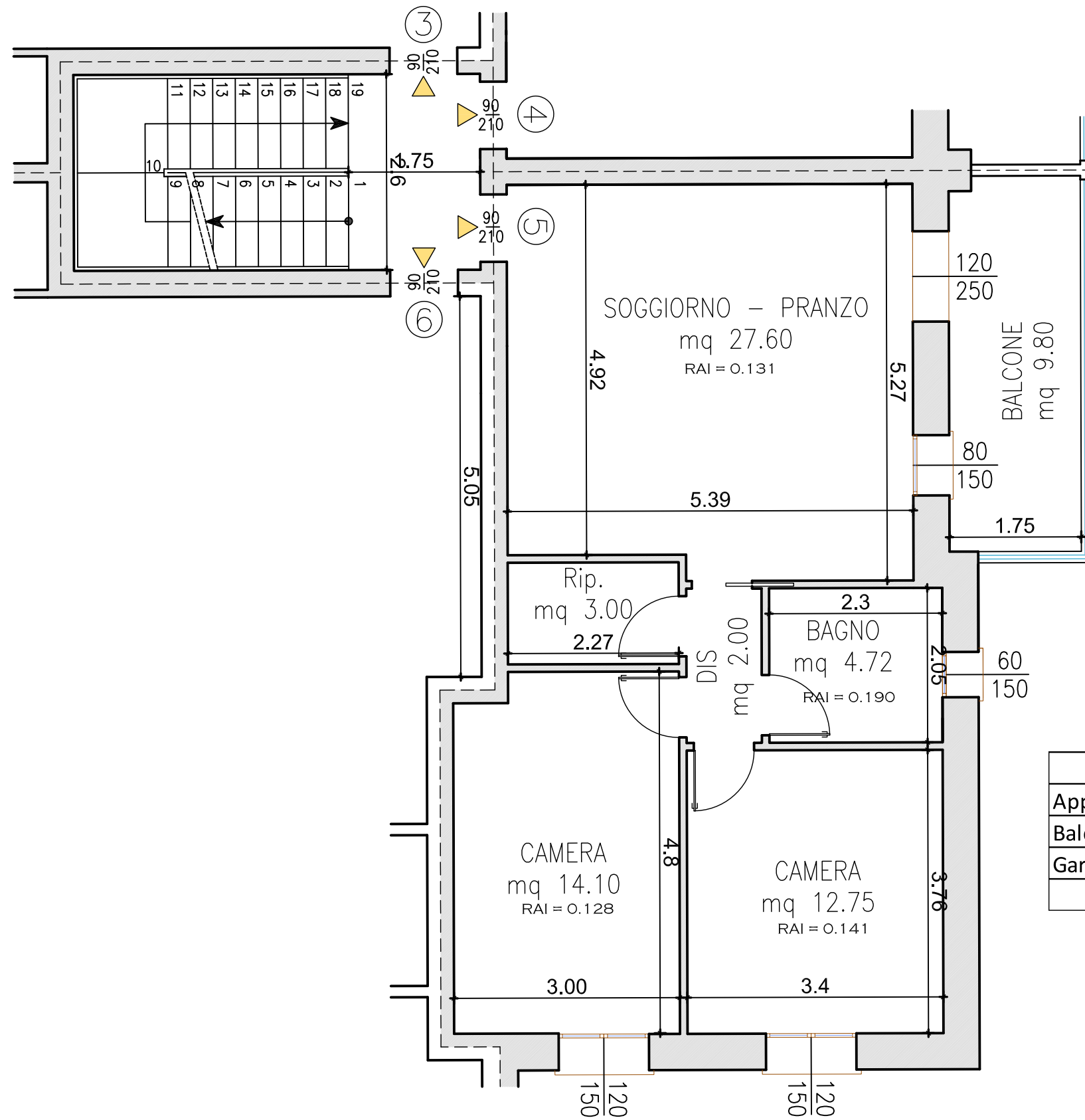




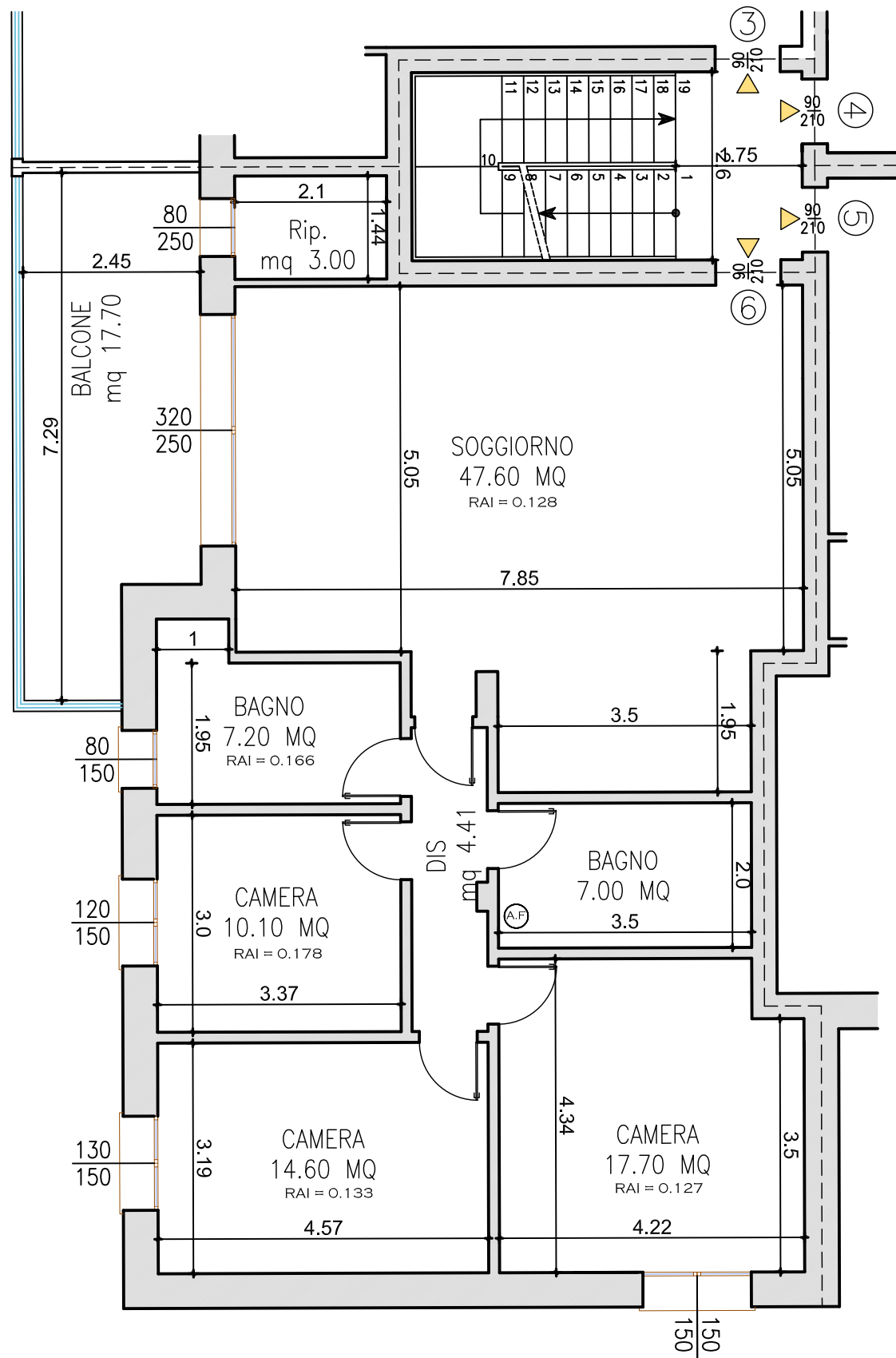
| Destinazione | MQ | % | Sup. Commerciali |
|----------------|-------|------|------------------|
| Appartamento 3 | 87,6 | 100% | 87,60 |
| Balcone | 17,7 | 60% | 10,62 |
| Garage 3 | 18,63 | 60% | 11,18 |
| Totale | | | 109,40 |

| Destinazione | MQ | % | Sup. Commerciali |
|----------------|-------|------|------------------|
| Appartamento 4 | 74,45 | 100% | 74,45 |
| Balcone | 9,8 | 60% | 5,88 |
| Garage 4 | 18,63 | 60% | 11,18 |
| Totale | | | 91,51 |





| Destinazione | MQ | % | Sup. Commerciali |
|----------------|-------|------|------------------|
| Appartamento 5 | 79,1 | 100% | 79,10 |
| Balcone | 9,8 | 60% | 5,88 |
| Garage 5 | 18,63 | 60% | 11,18 |
| Totale | | | 96,16 |



| Destinazione | MQ | % | Sup. Commerciali |
|----------------|--------|------|------------------|
| Appartamento 6 | 135,42 | 100% | 135,42 |
| Balcone | 17,7 | 60% | 10,62 |
| Garage 6 | 18,63 | 60% | 11,18 |
| Totale | | | 157,22 |